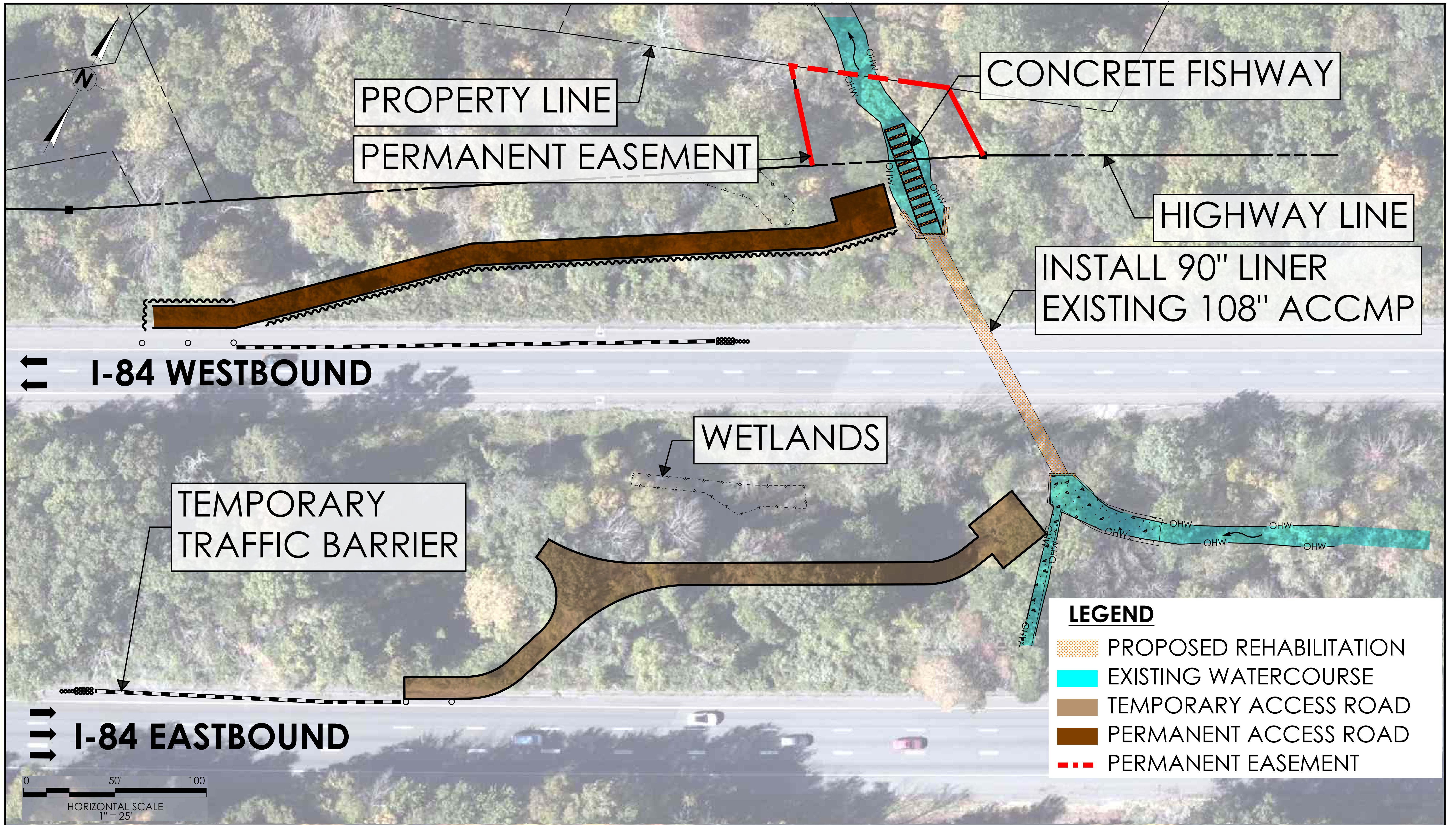


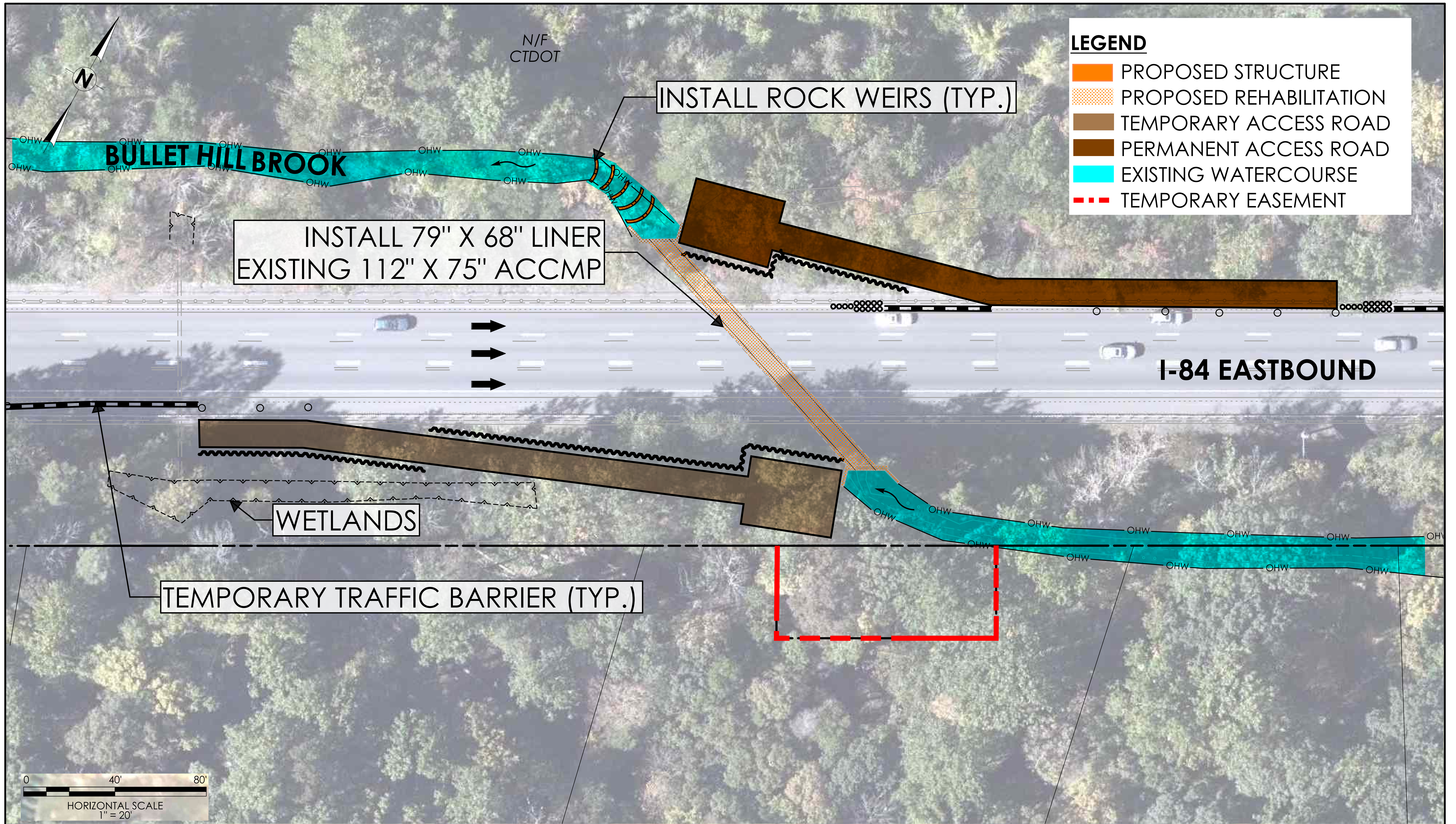
LEGEND

- PROPOSED STRUCTURE
- PROPOSED REHABILITATION (STRUCTURAL PIPE LINING)
- CONTROLLED LOW STRENGTH MATERIAL

PROPOSED REHABILITATION - PIPE LINER
 SECTION ILLUSTRATING
 COMPONENTS OF A CULVERT REHABILITATION
 SOUTHURY, CONNECTICUT

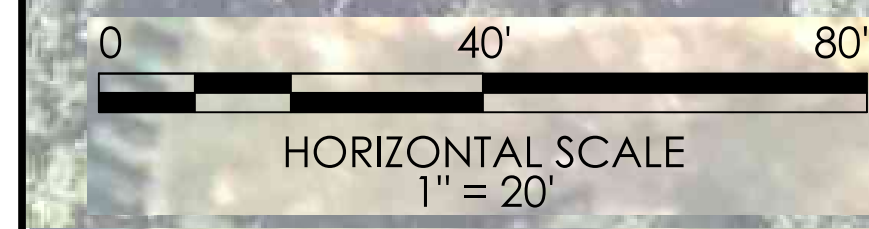


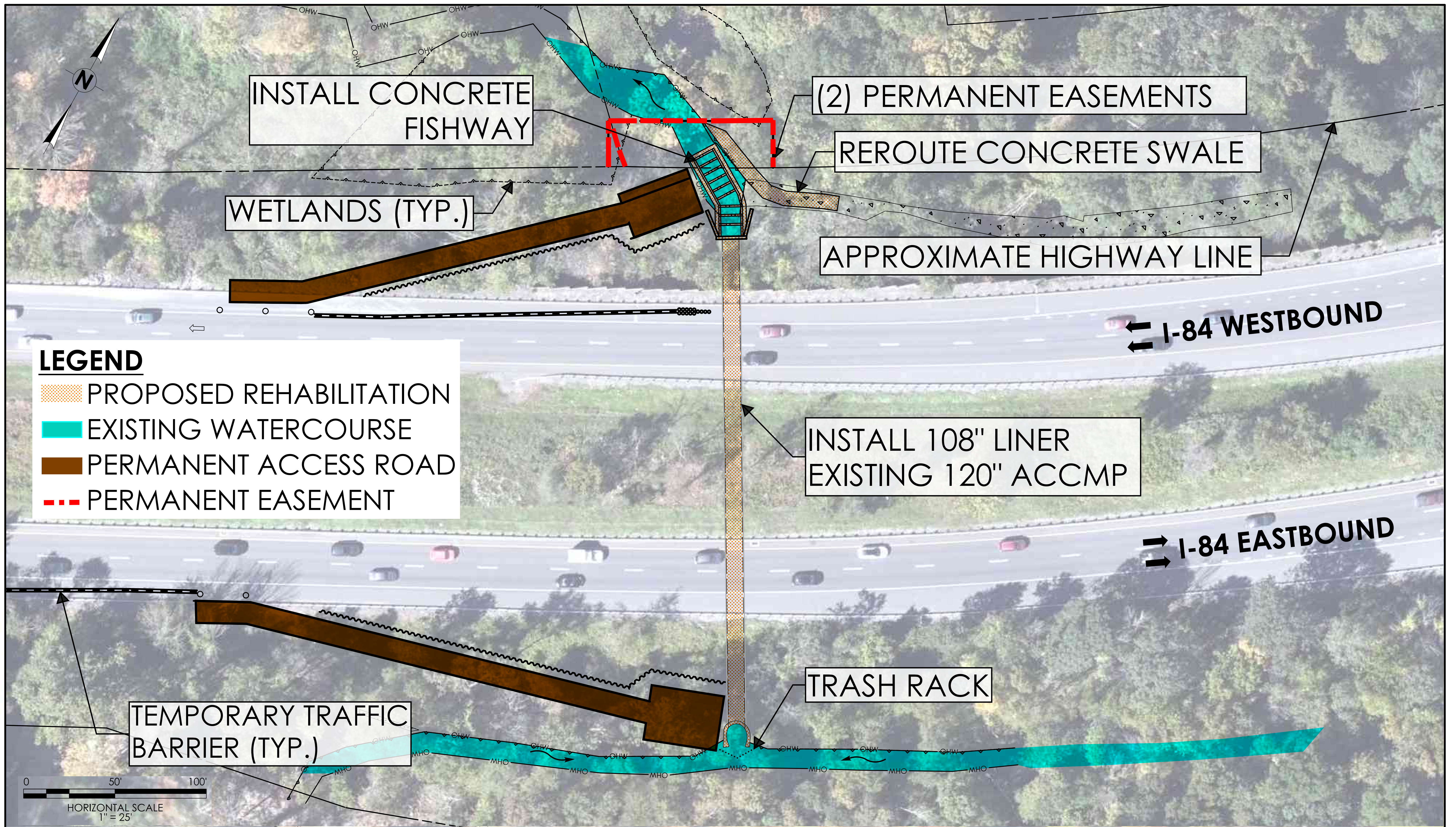
BRIDGE NO. 07042 - GENERAL PLAN
 INTERSTATE 84 WB OVER BULLET HILL BROOK
 SOUTHURY, CONNECTICUT
 STATE PROJECT NO. 0130-0186



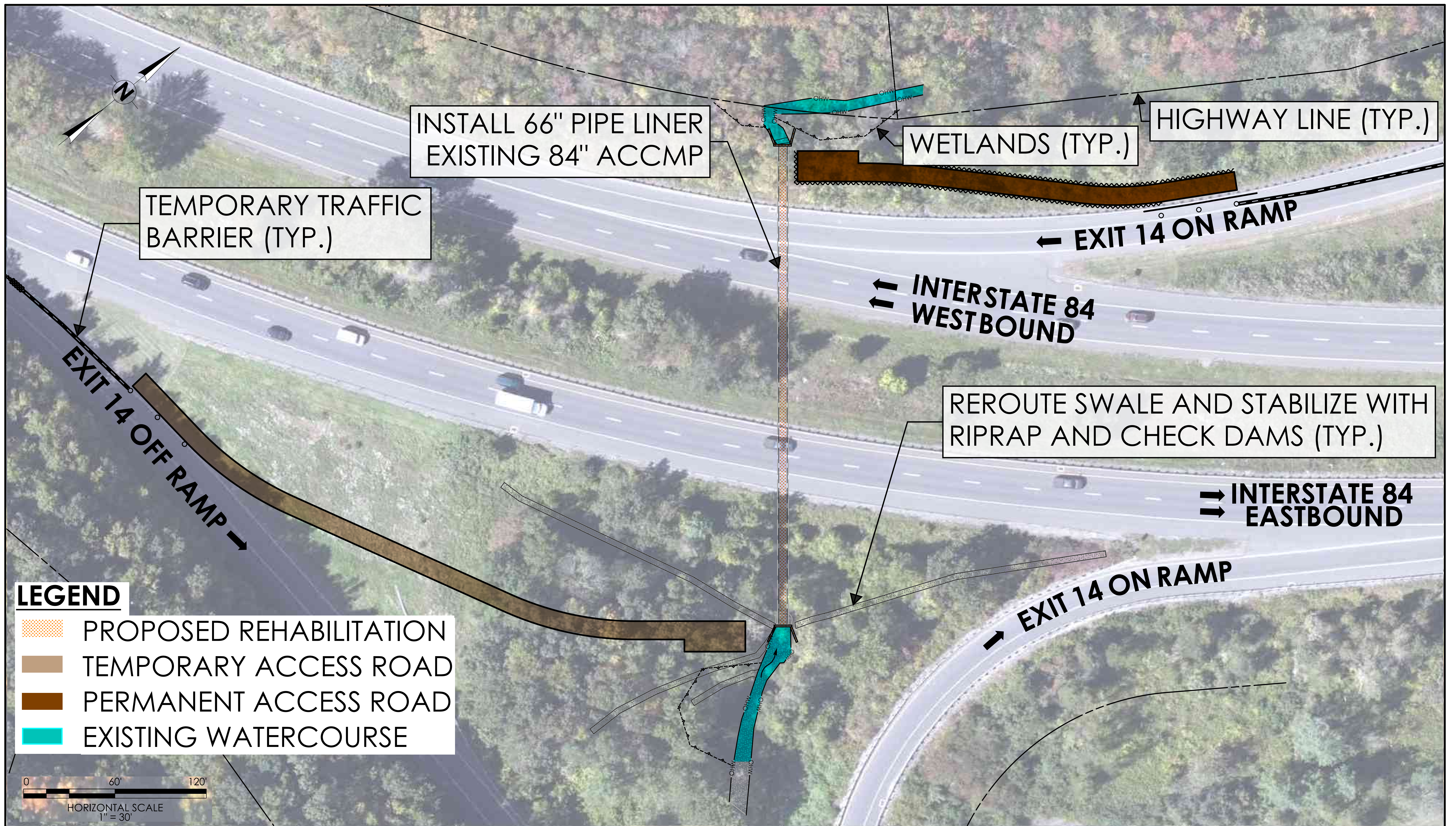
LEGEND

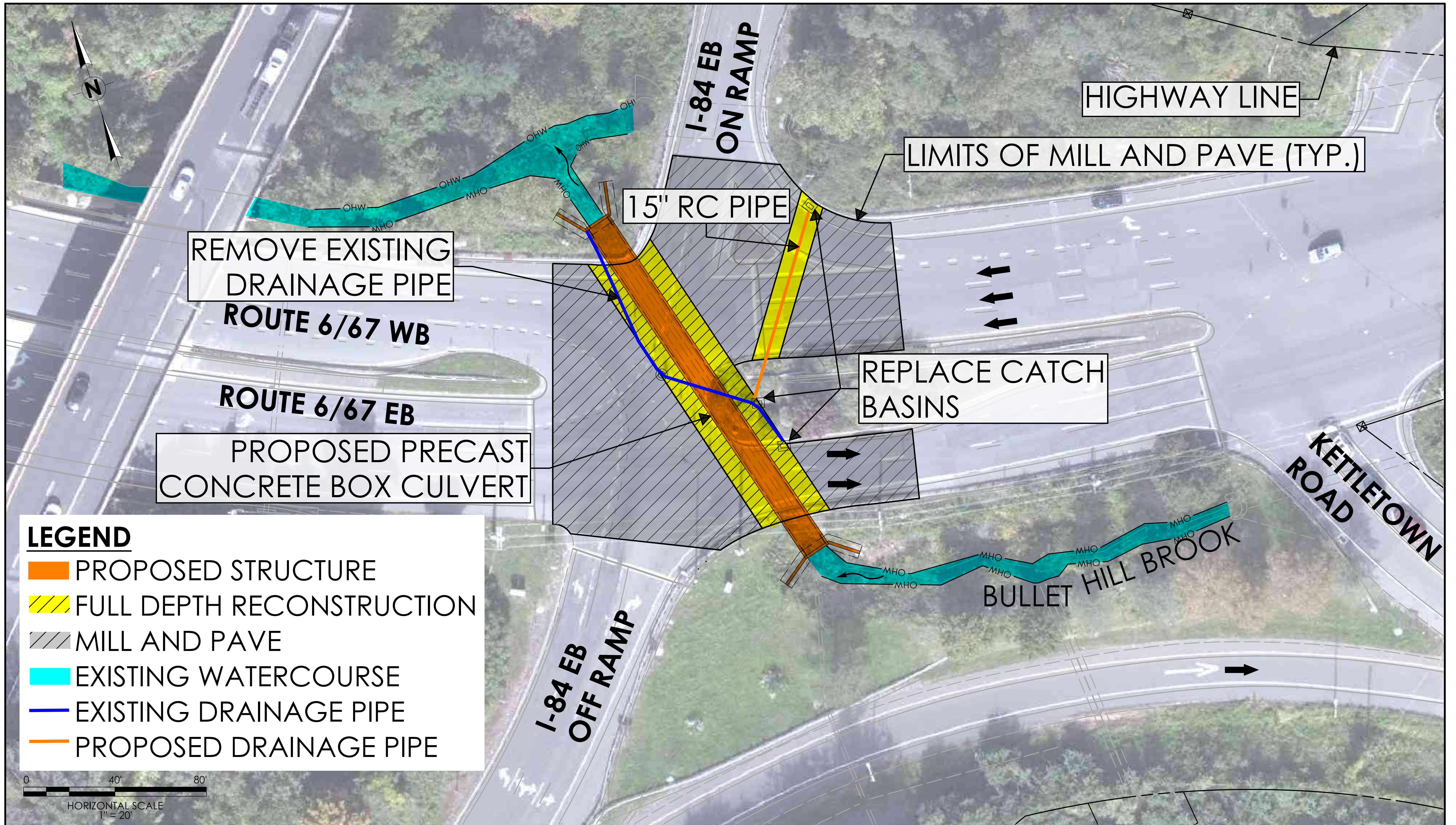
- PROPOSED STRUCTURE
- PROPOSED REHABILITATION
- TEMPORARY ACCESS ROAD
- PERMANENT ACCESS ROAD
- EXISTING WATERCOURSE
- TEMPORARY EASEMENT





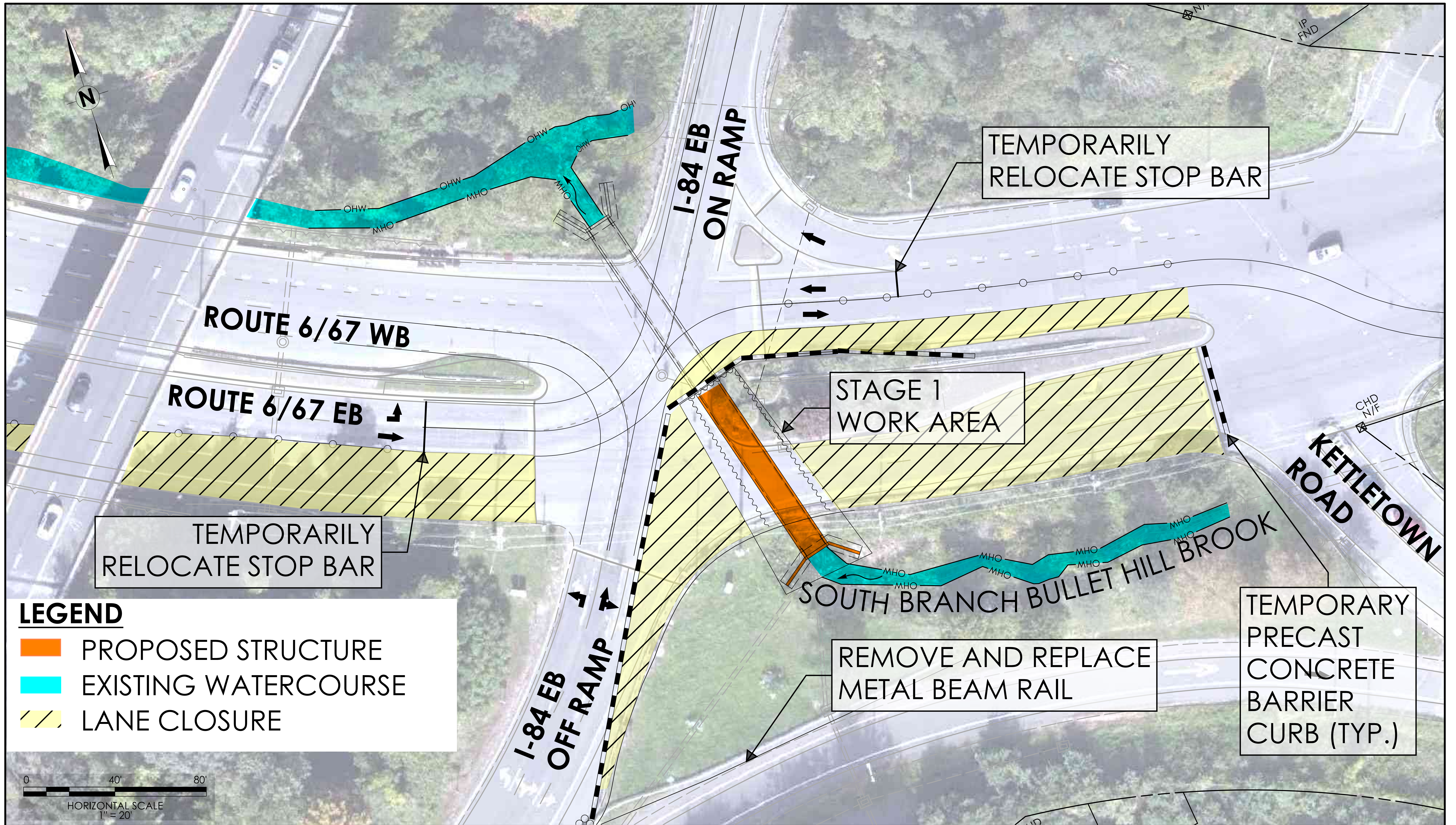
BRIDGE NO. 07044 - GENERAL PLAN
 INTERSTATE 84 OVER OLIVER BROOK
 SOUTHURY, CONNECTICUT
 STATE PROJECT NO. 0130-0188

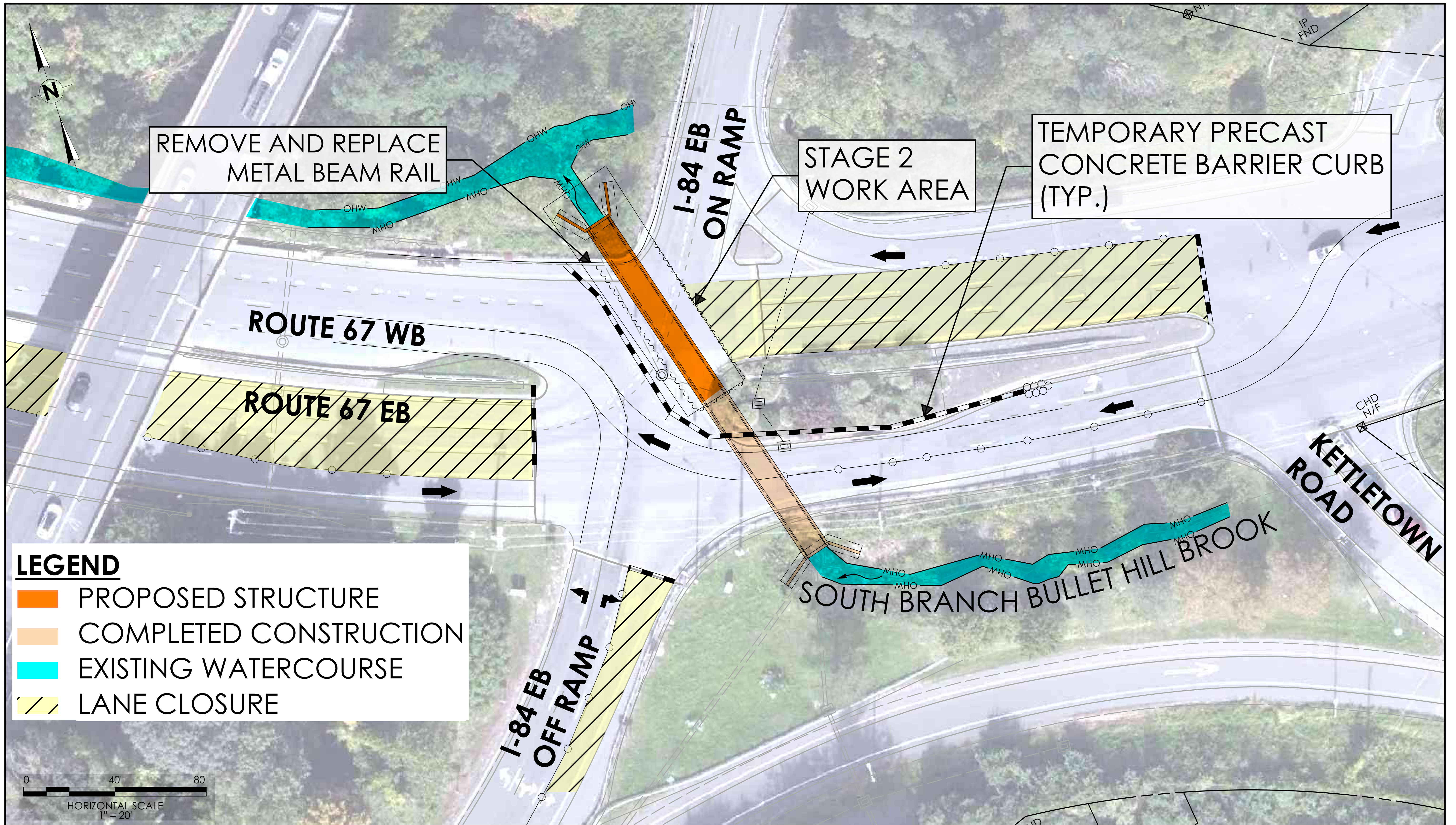




BRIDGE NO. 07051 - GENERAL PLAN

US RT. 6 & SR 67 OVER SOUTH BRANCH BULLET HILL BROOK
 SOUTHURY, CONNECTICUT
 STATE PROJECT NO. 0130-0190





LEGEND

- PROPOSED STRUCTURE
- COMPLETED CONSTRUCTION
- EXISTING WATERCOURSE
- LANE CLOSURE

BRIDGE NO. 07051 - MAINTENANCE AND PROTECTION OF TRAFFIC - STAGE 2

US RT. 6 & SR 67 OVER SOUTH BRANCH BULLET HILL BROOK
 SOUTHURY, CONNECTICUT
 STATE PROJECT NO. 0130-0190

