



Enrollment Analysis and Projections

April 4, 2017

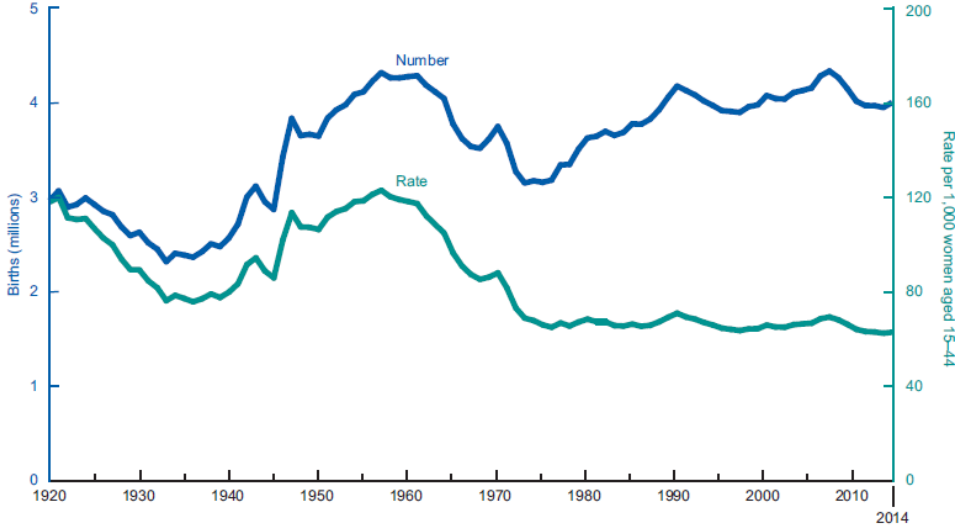


Introduction

- National & State Trends
- Local Factors Impacting Enrollment
- Enrollment Trends
- Projections
- Next Steps

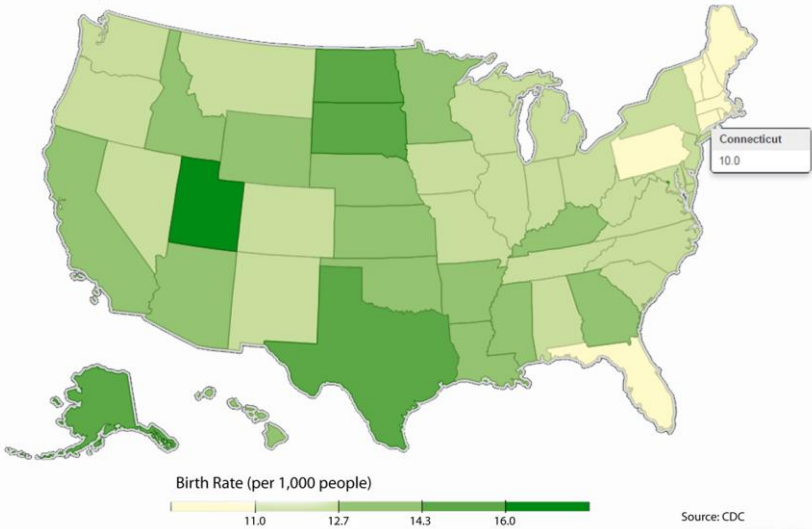
National Trends

- Prolonged period of record low birth rates in U.S.
- New England birth rates among lowest in the country



NOTE: Beginning with 1959, trend lines are based on registered live births; trend lines for 1920–1958 are based on live births adjusted for underregistration.

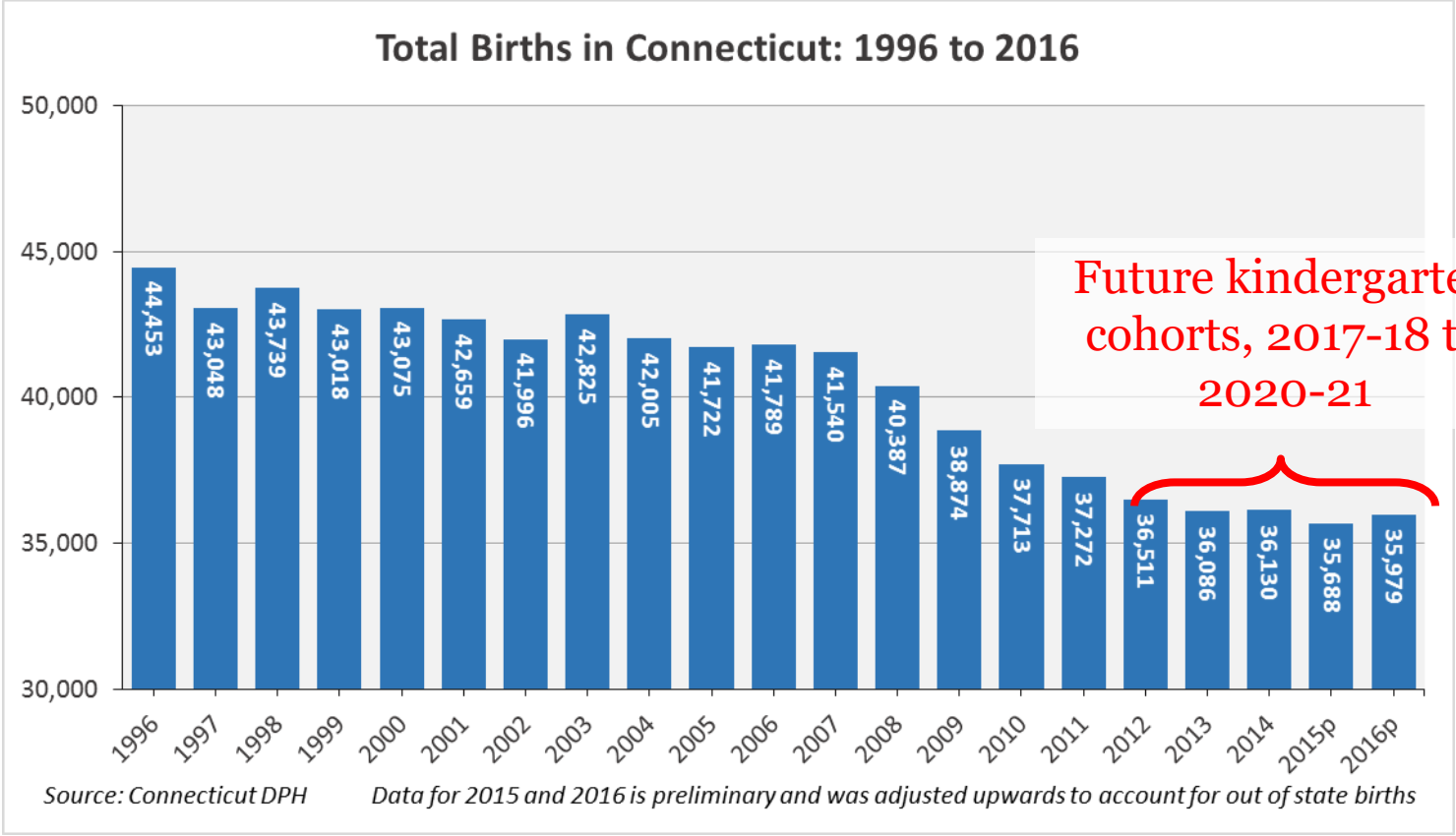
Birth Rates, 2013



Source: CDC



CT Births

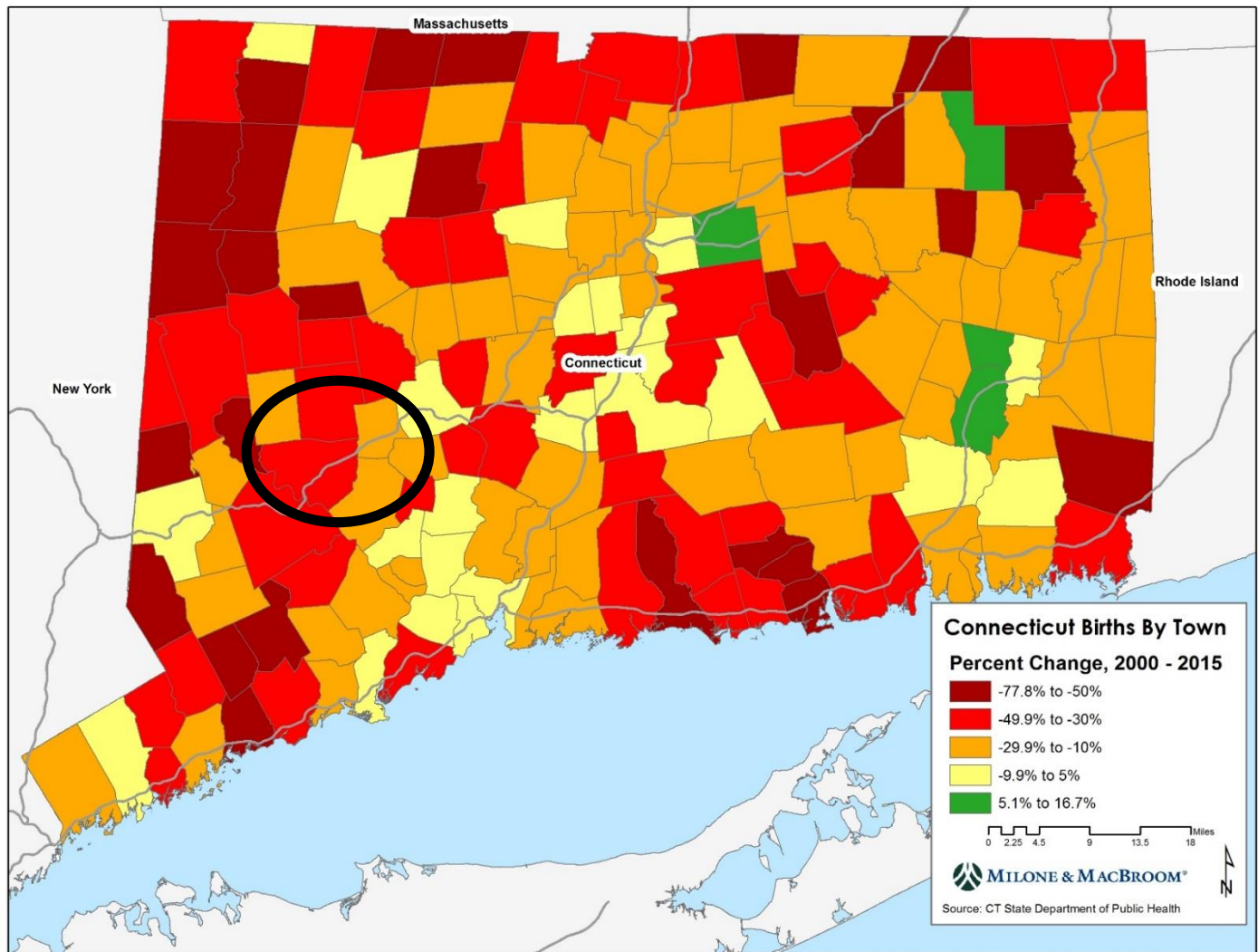


- Decline began with Recession, but has not recovered
- Attributed to numerous factors: women in college, workforce, economics, aging demographic profile



Birth Trends 2000-2015

Region 15
not alone in
significant
decrease in
birth trends

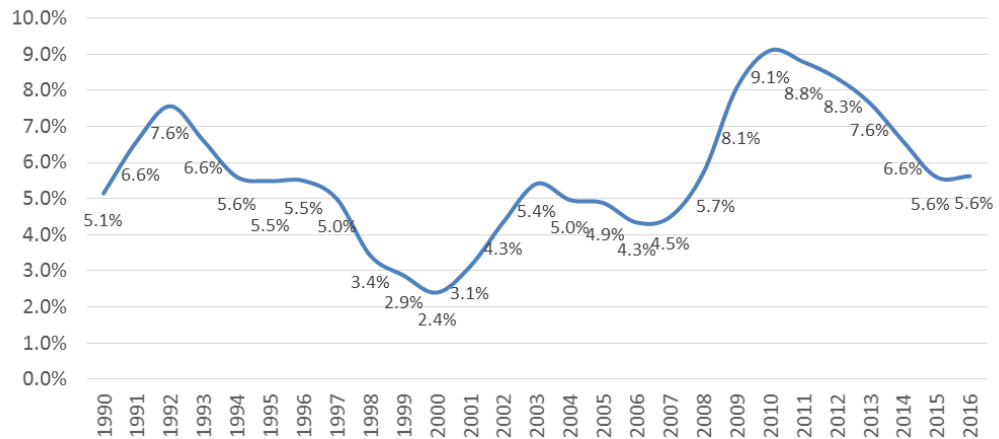




CT Housing & Employment

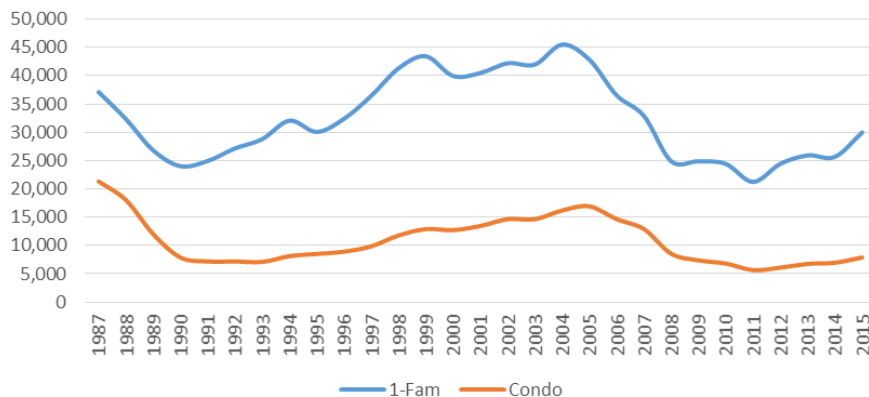
- Single-family home sales strengthening
- Prices remain flat
- Little progress towards higher employment since Q1 2015

Connecticut Average Annual Unemployment Rate, 1990 - 2016

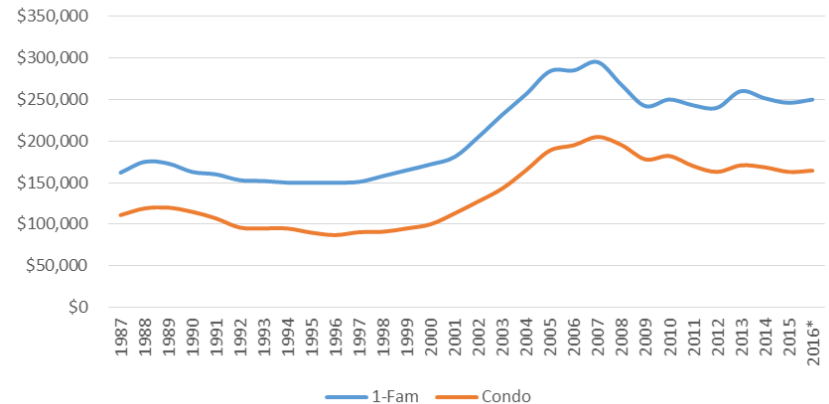


Source: CT Dept. of Labor

Connecticut Annual Home Sales



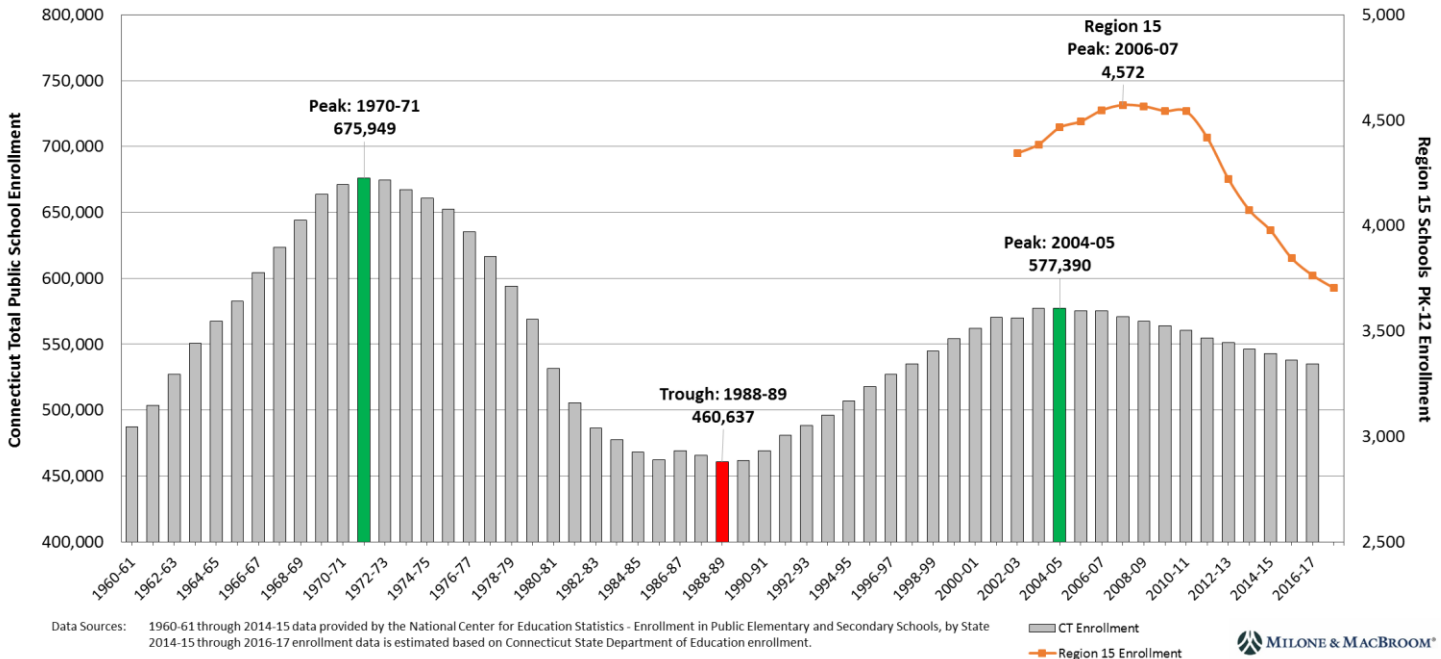
Connecticut Median Housing Prices





CT Enrollment History

Public School Enrollment in Connecticut: 1960 to 2016

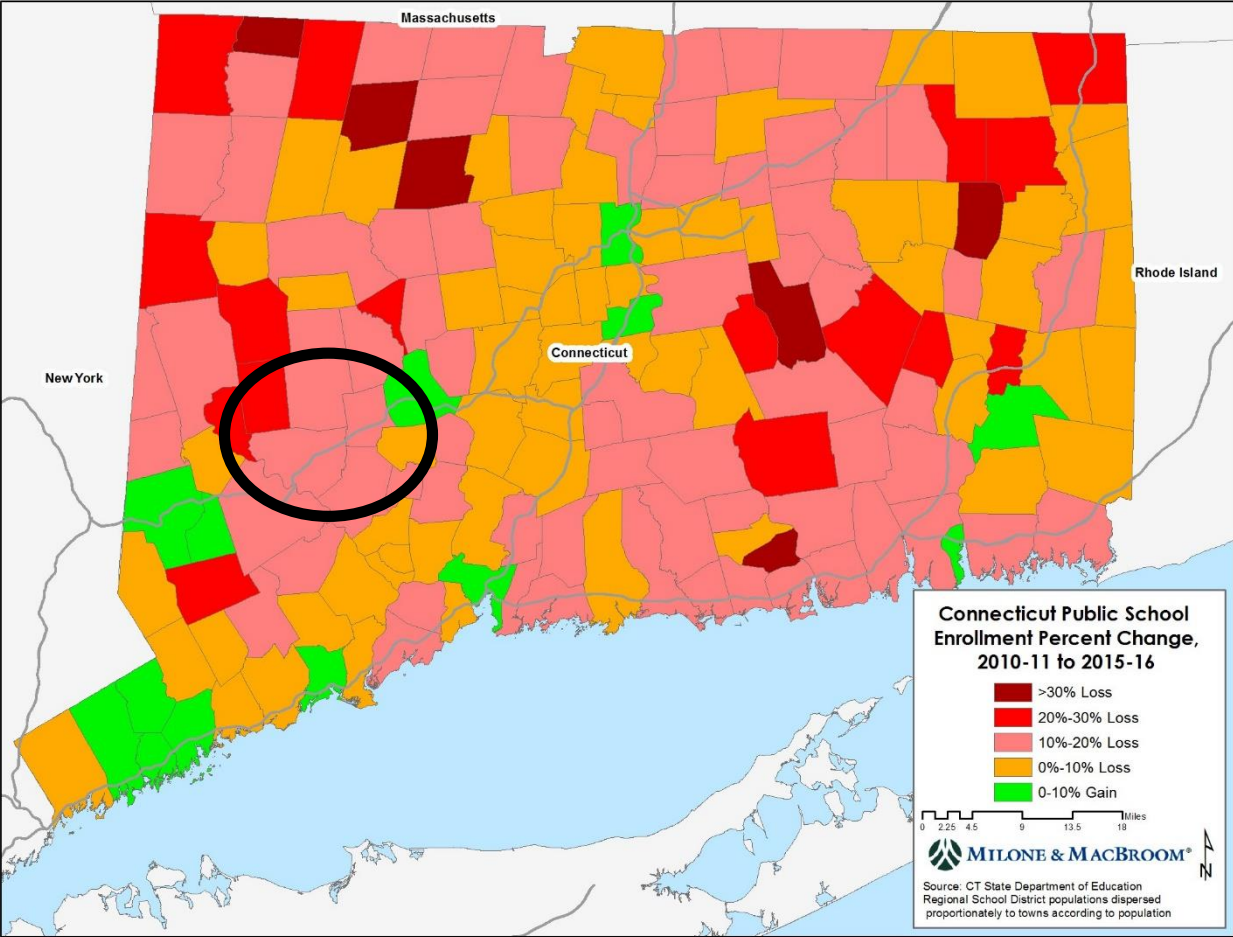


- Statewide enrollments are down 6% over the last decade, with declines in all but one of the past ten years
- 33 Years from peak to peak



Enrollment Trends 2010-11 to 15-16

Enrollment decrease, similar to that of Region 15, has been experienced around the State





Local Demographics

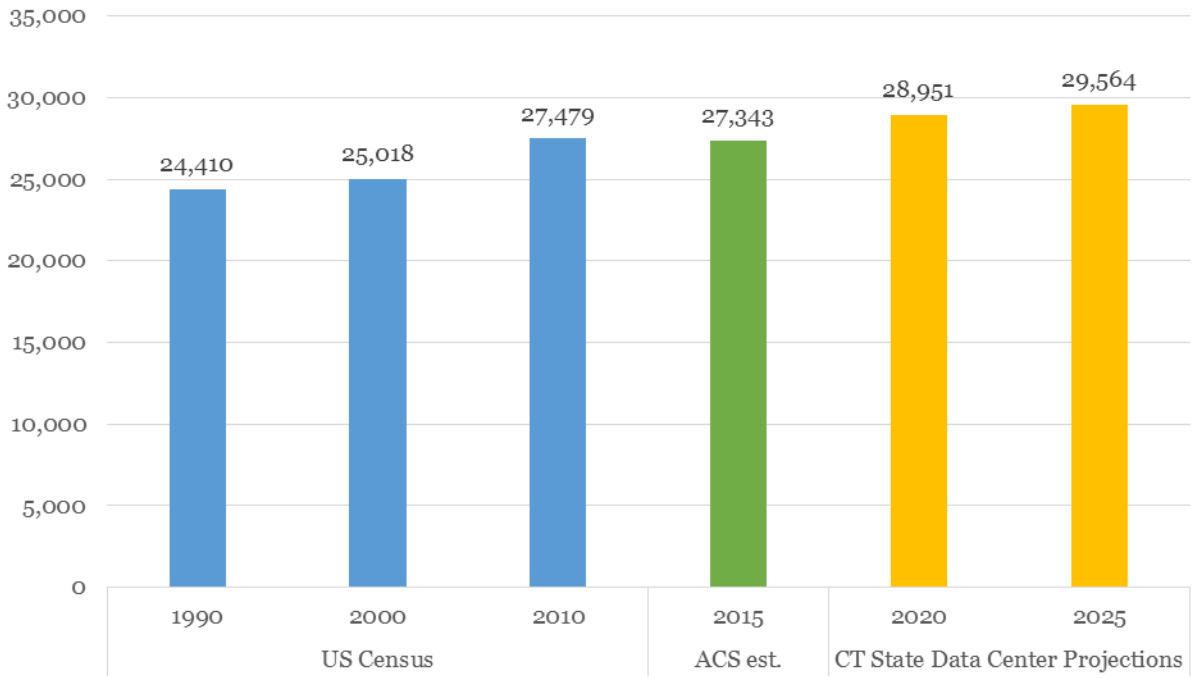
- Total Population
- Age Profile
- Females of Child-Bearing Age
- Unemployment
- Births



Total Population

- CT State Data Center (CTSDC) population projections (from 2012) forecast a modest (8%) population increase out to 2025
- Growth distributed fairly evenly between towns

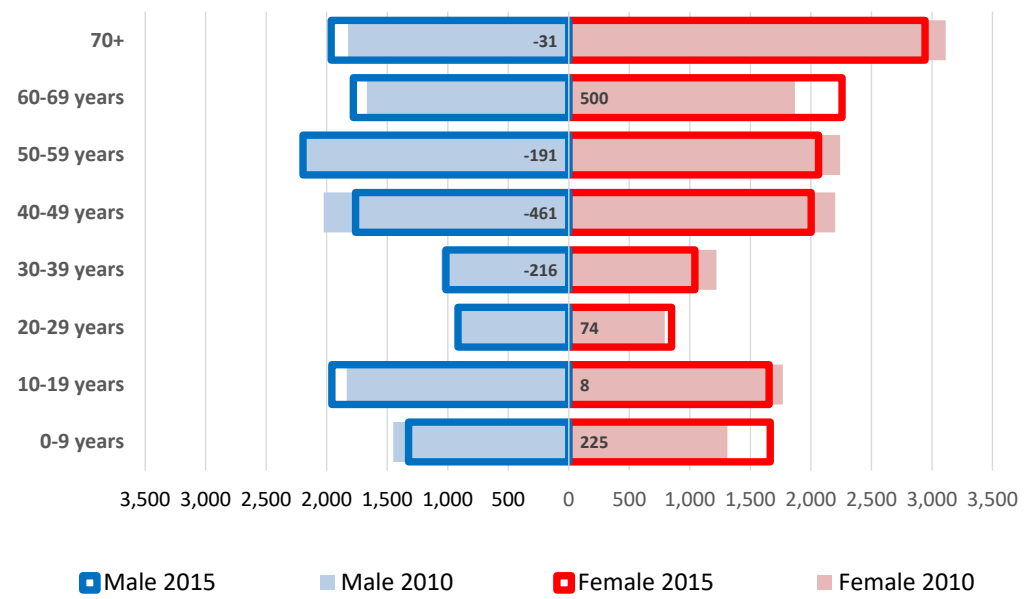
RSD15 Population Projections





RSD 15 Age Profile

RSD15 Change in Population Distribution, 2010-2015



Source: U.S. census 2010 & ACS Estimates 2011-2015

- Estimated growth in youngest age group from 2010 to 2015
- Decline in 30-49 working age cohorts (prime ages for parents of students)
- Median ages for both Middlebury and Southbury increased from 2000 to 2010, and estimated again to have increased in 2015 to 45.6 and 50.3 respectively

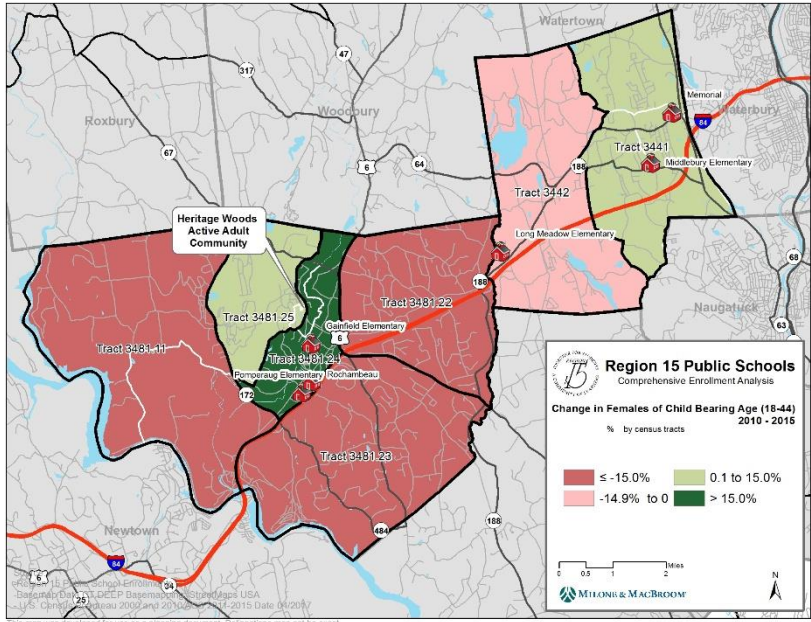


Females of Childbearing Age

RSD15 Female Child-bearing Age(18-44) Population Change by Census Tracts, 2000-2015

Town	2000 Census Tracts	2010-15 Census Tracts	2000	2010	2015	Change (No.) 2010-2015	Change (%) 2010-2015
Middlebury	Tract 3441	Tract 3441	668	668	745	77	11.5%
	Tract 3442	Tract 3442	320	394	387	-7	-1.8%
	Sub-Total		988	1,062	1,132	70	6.6%
Southbury	Tract 3481.02	Tract 3481.24	398	140	237	97	69.3%
		Tract 3481.25		284	320	36	12.7%
	Tract 3481.11	Tract 3481.11	433	344	334	-10	-2.9%
	Tract 3481.21	Tract 3481.22	1,614	562	450	-112	-19.9%
		Tract 3481.23		858	728	-130	-15.2%
	Sub-Total		2,445	2,188	2,069	-119	-5.4%
RSD 15 Total			3,433	3,250	3,201	-49	-1.5%

Note: Tract 3481.02 & 3481.21 in 2000 were split into four smaller tracts as shown on the table
 Source: U.S. census 2010 & ACS Estimates 2011-2015, 04/2017.

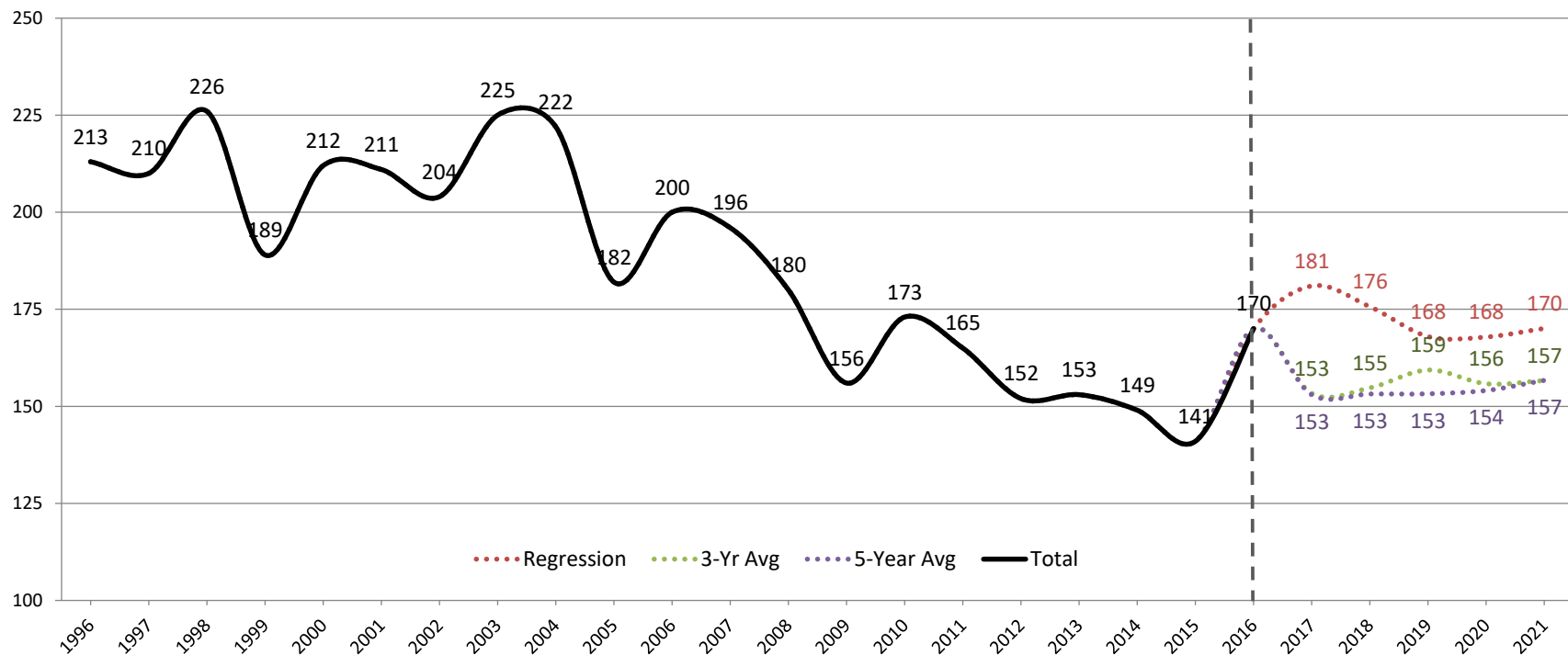


- Small overall decline in females of child-bearing age estimated for RSD 15 over last five years
- Decrease mostly in Southbury in single-family neighborhoods, while Middlebury experienced an increase



Births

Region 15 Actual and Projected Births, 2000-2021



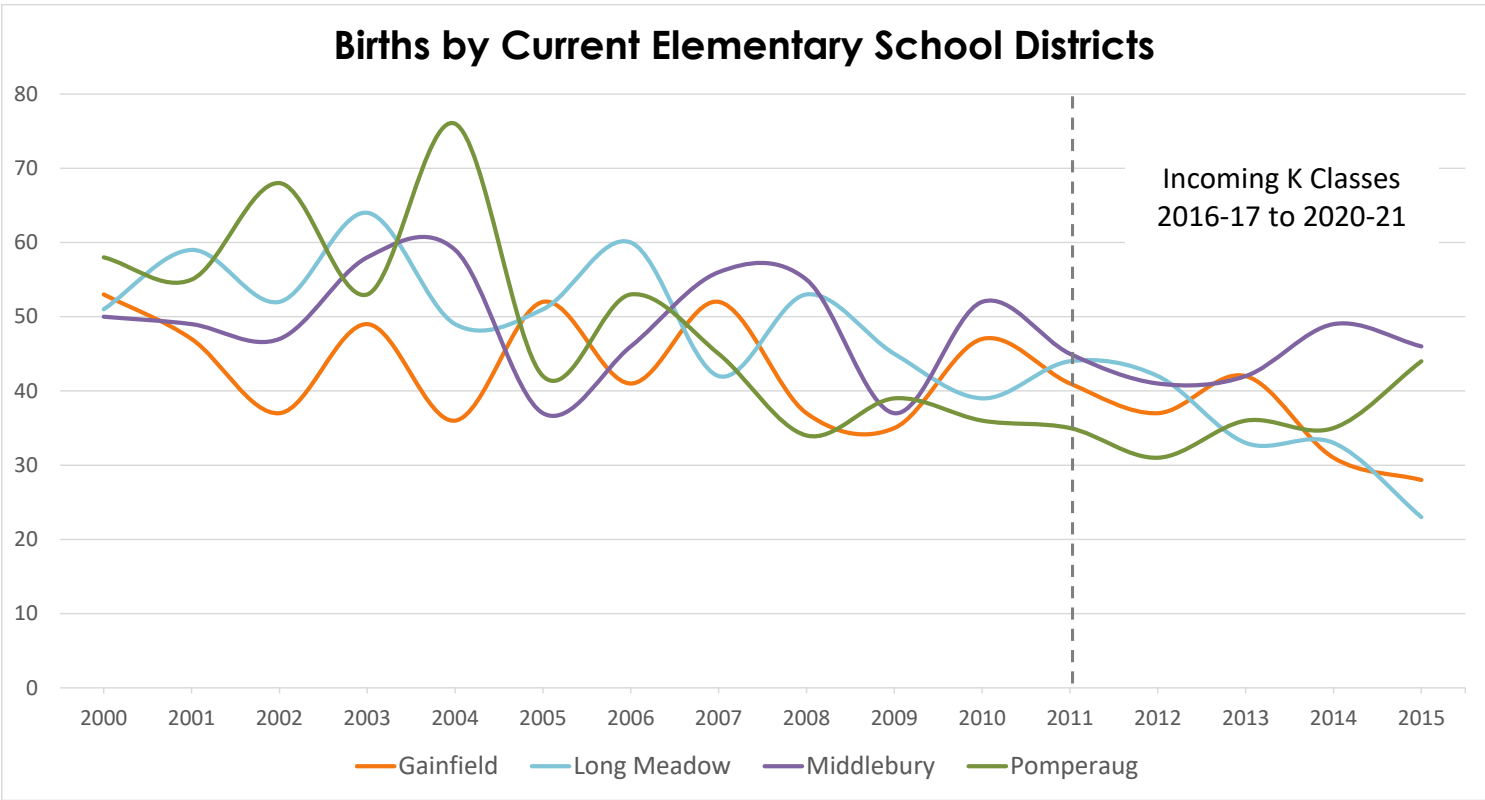
Source: CT Department of Health Vital Statistics

This study was approved by the DPH HIC. Certain data used in this study were obtained from DPH. MMI assumes full responsibility for analyses and interpretation of this data.

- Birth rates over the last 5 years down about 30% from rates in the early 2000s
- 2016 estimates show a significant uptick



Births by Attendance Zone



- GES and LMES on general downward trend the last few years
- MES steady to slightly upward
- PES on upward trend
- 2016 data not available at address level yet



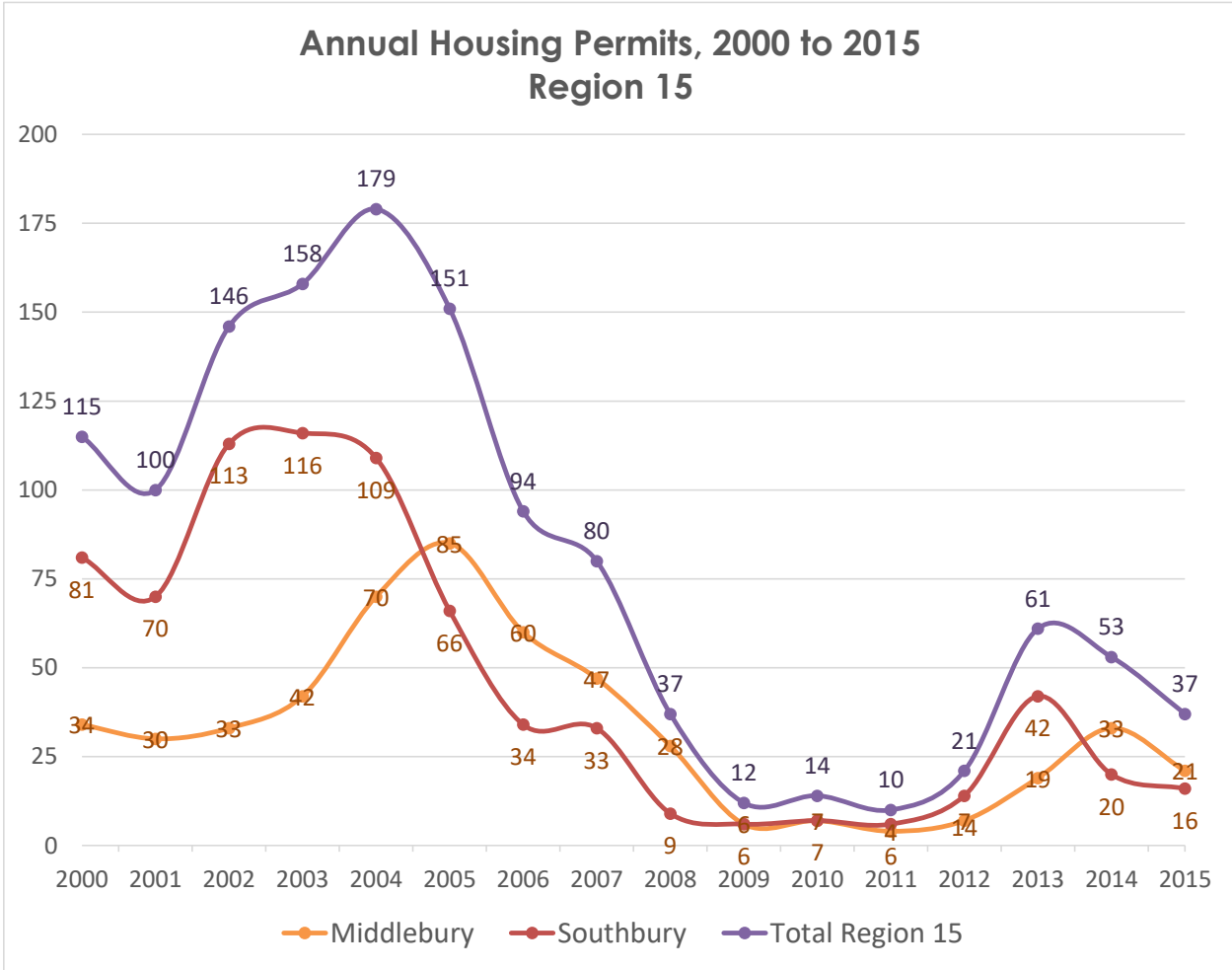
Recent Housing Trends

- Permitting
- Unemployment
- Sales



Housing Permits

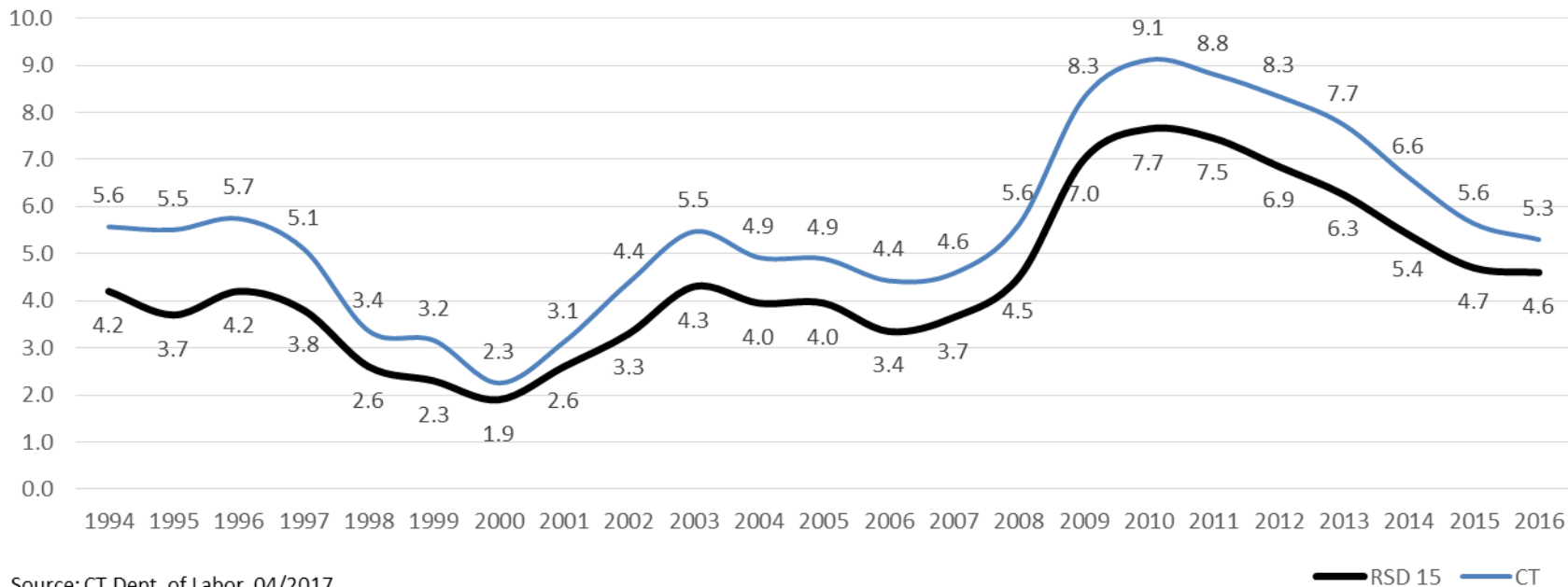
- New construction picked up in 2013, but was not sustained
- 2016 data not available from CT DECD





RSD 15 Unemployment

Annual Unemployment Rate, RSD 15 and CT

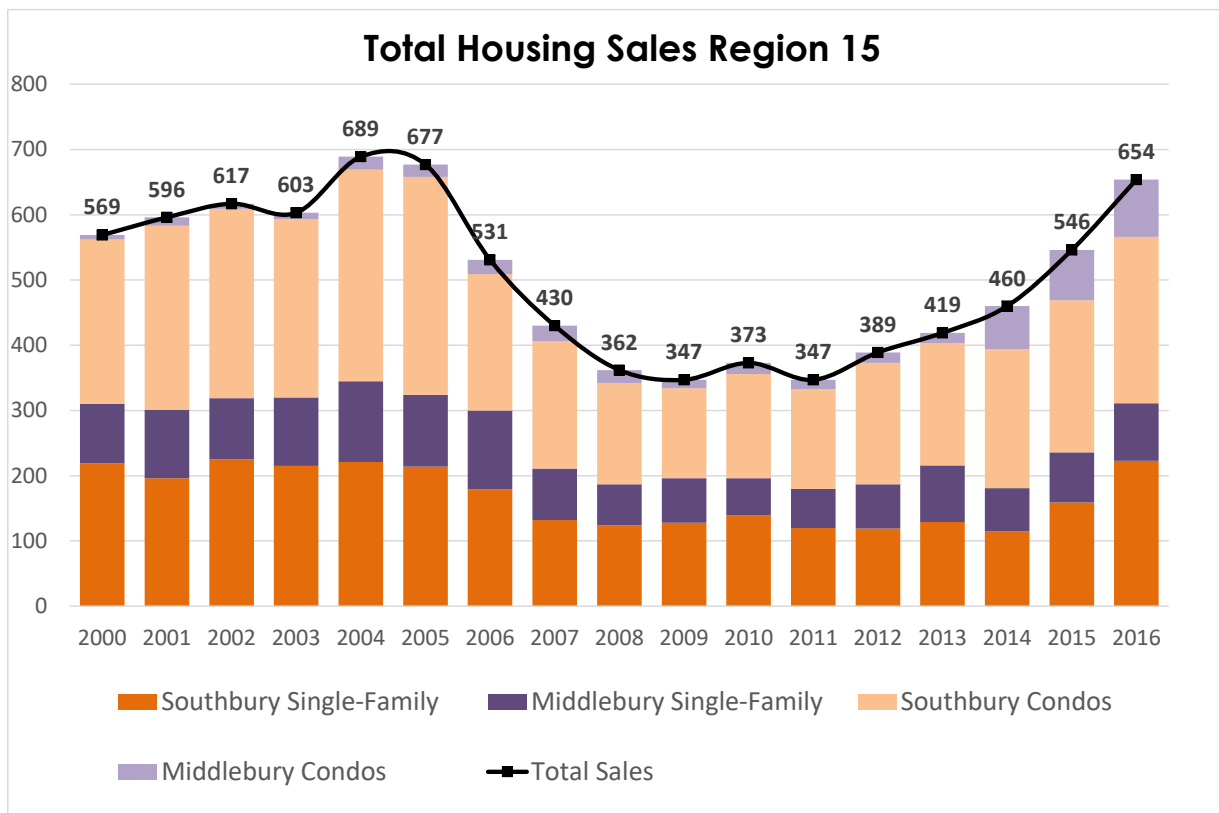


Source: CT Dept. of Labor, 04/2017.

- RSD15 rates follow state trends
- Consistently remain about a point lower than State



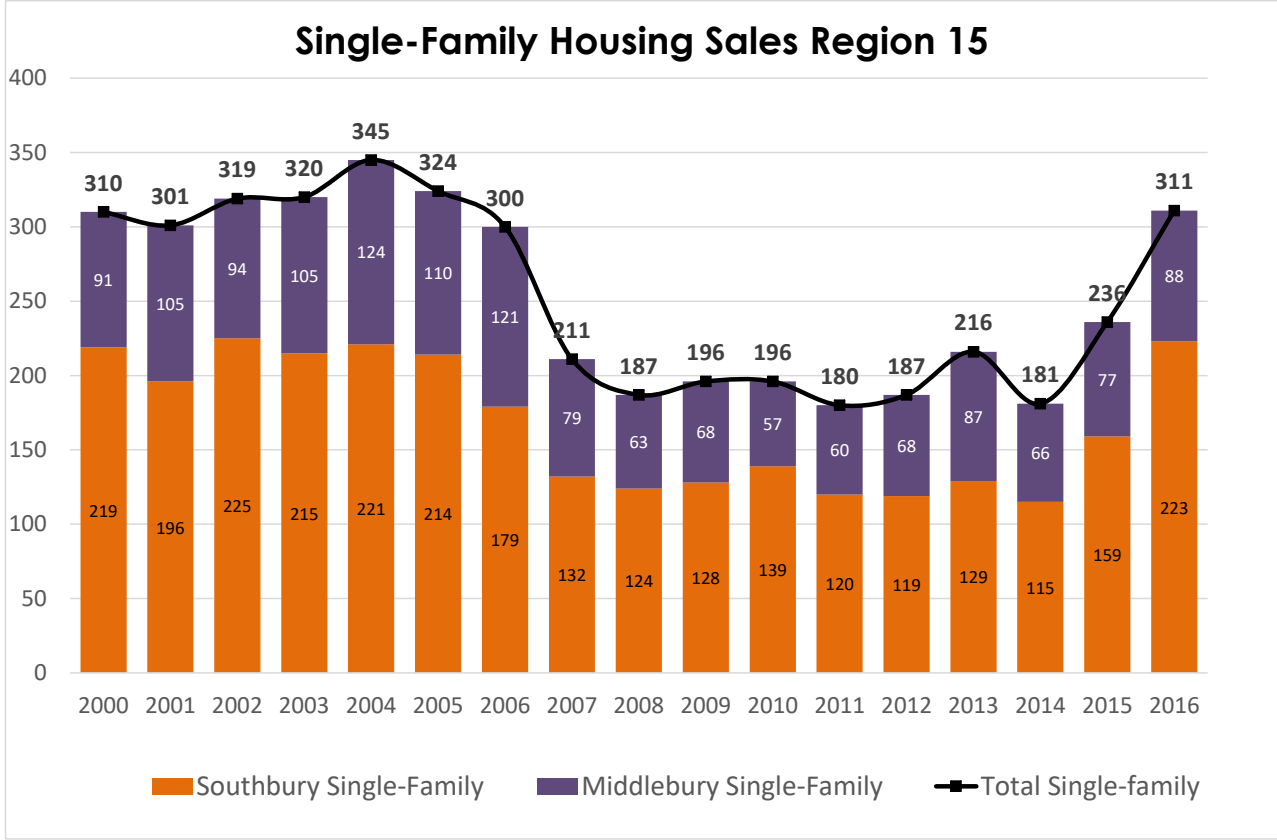
Total Housing Sales



- Sales trending up over the last several years
- Largely due to condo sales until recently, when single-family sales increased 70% from 2014 to 2016
- Single-family sales levels back to early 2000s level



Single-Family Sales

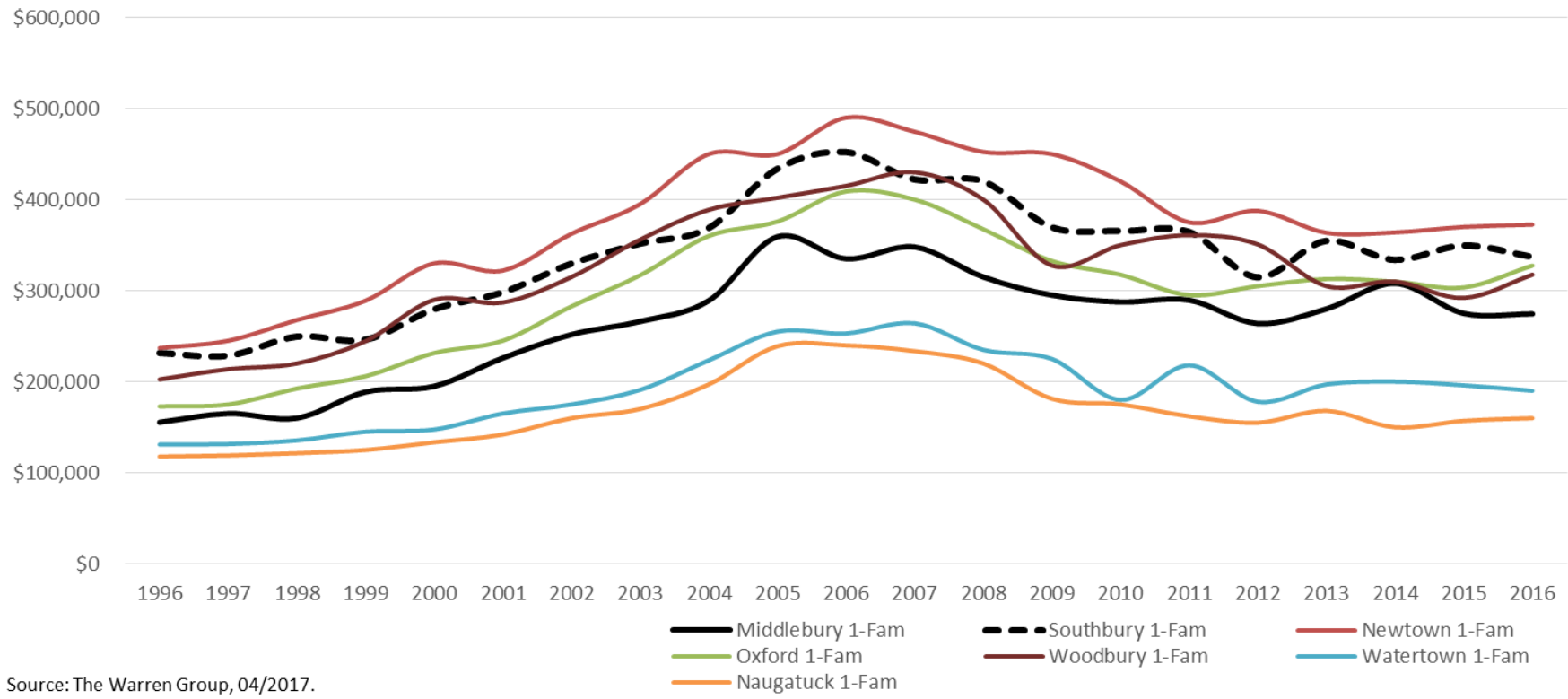


- Significant uptick in single-family sales over last 3 years
 - Stronger growth in Southbury (up 70% from 2014)
 - Growth, albeit slower, in Middlebury (up 33% from 2014)



Single Family Median Sales Price

Median Housing Sales Price of RSD 15 and Neighborhood Towns, 1996-2016
Single Family



Source: The Warren Group, 04/2017.

- Single family sales prices in line with region
- Prices levelling off at about 20% below peak of mid-2000s in both Middlebury and Southbury



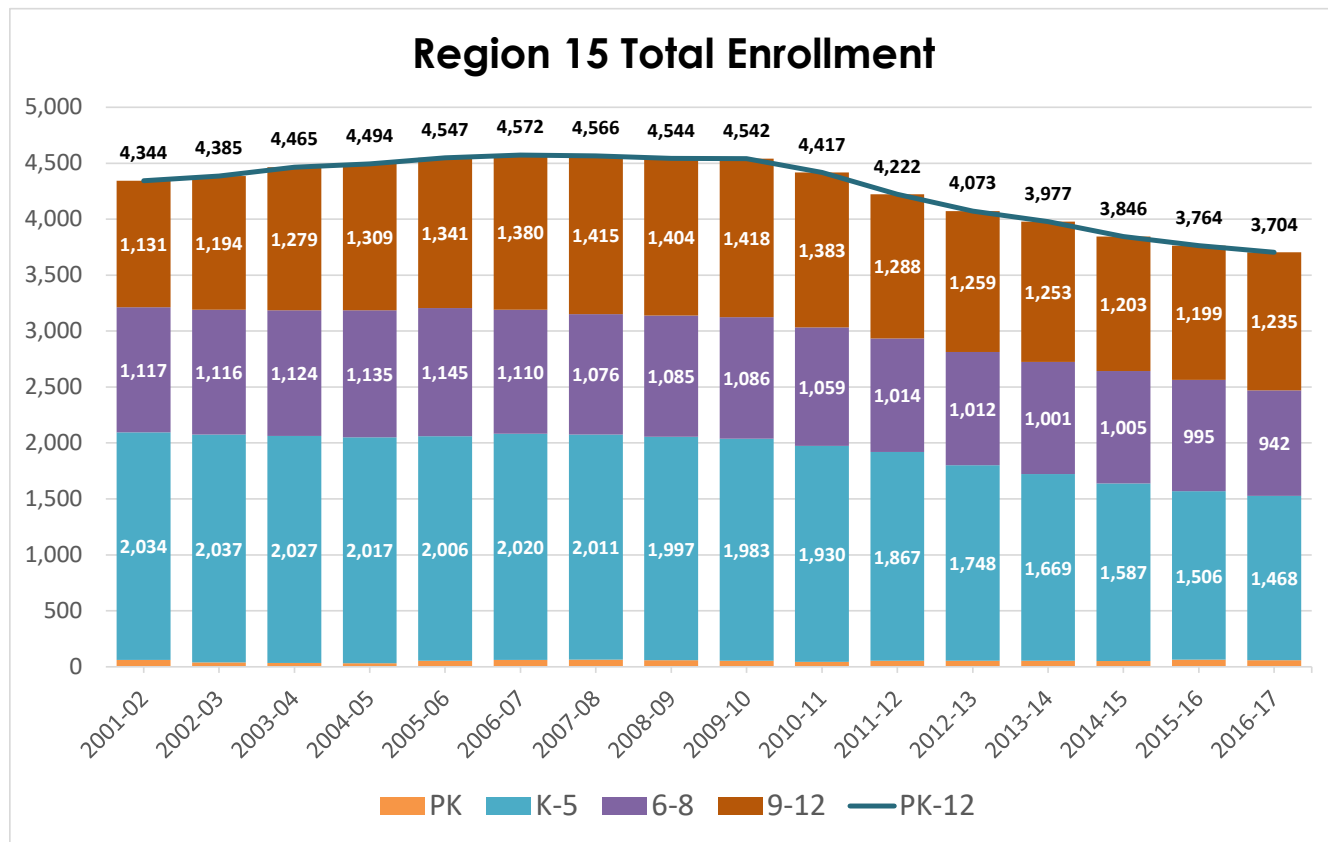
Enrollment Trends

- District
- Elementary
- Middle



District Enrollments

- Overall 18% decline in PK-12 from 2006-07 to Current Year
- Much of that Loss Experienced in the Last Five Years:
 - 12% Decrease in PK-12
 - 21% Decrease in K-5
 - 7% Decrease in 6-8
 - 3% Decrease in 9-12

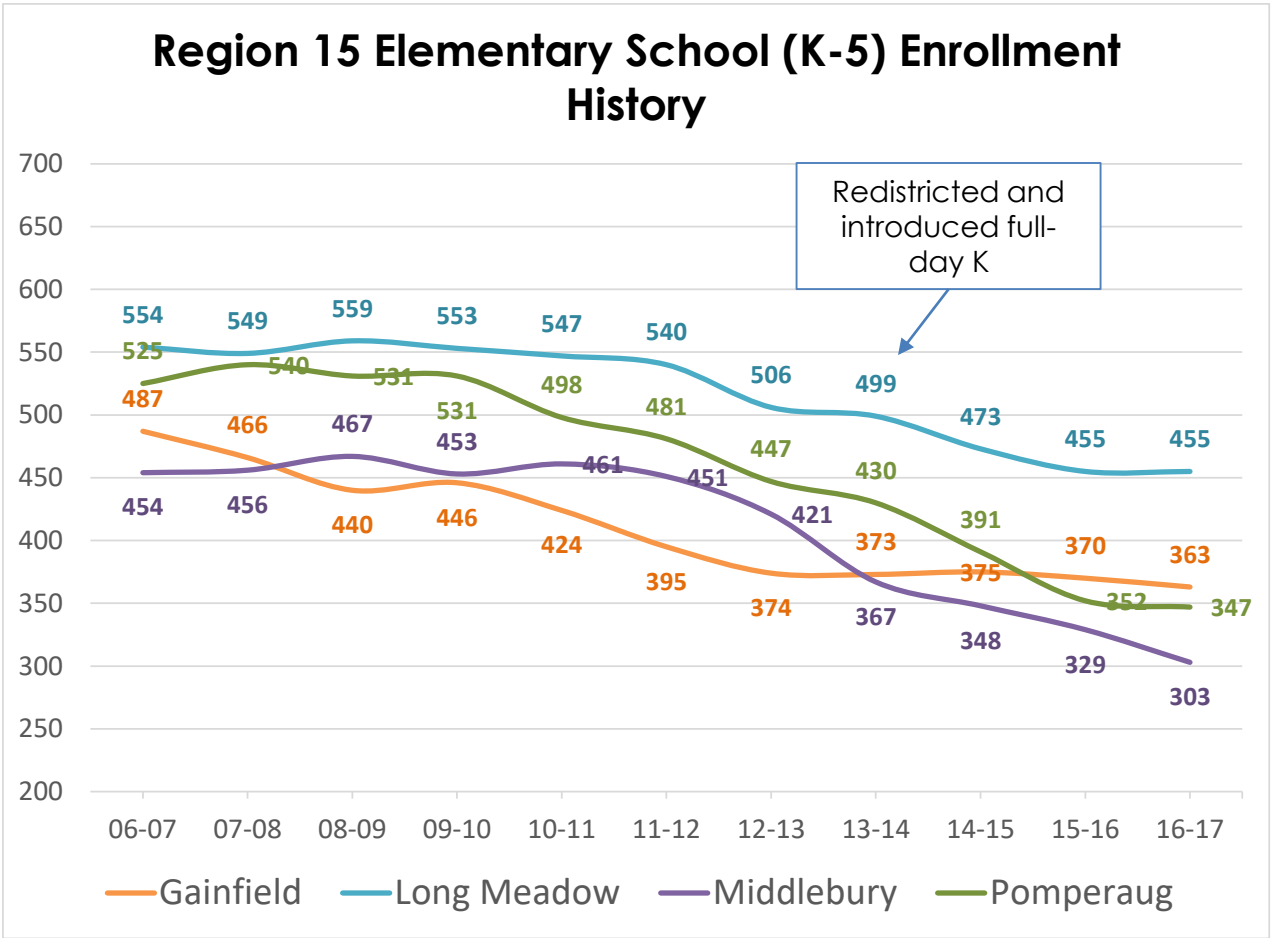




Elementary Enrollments

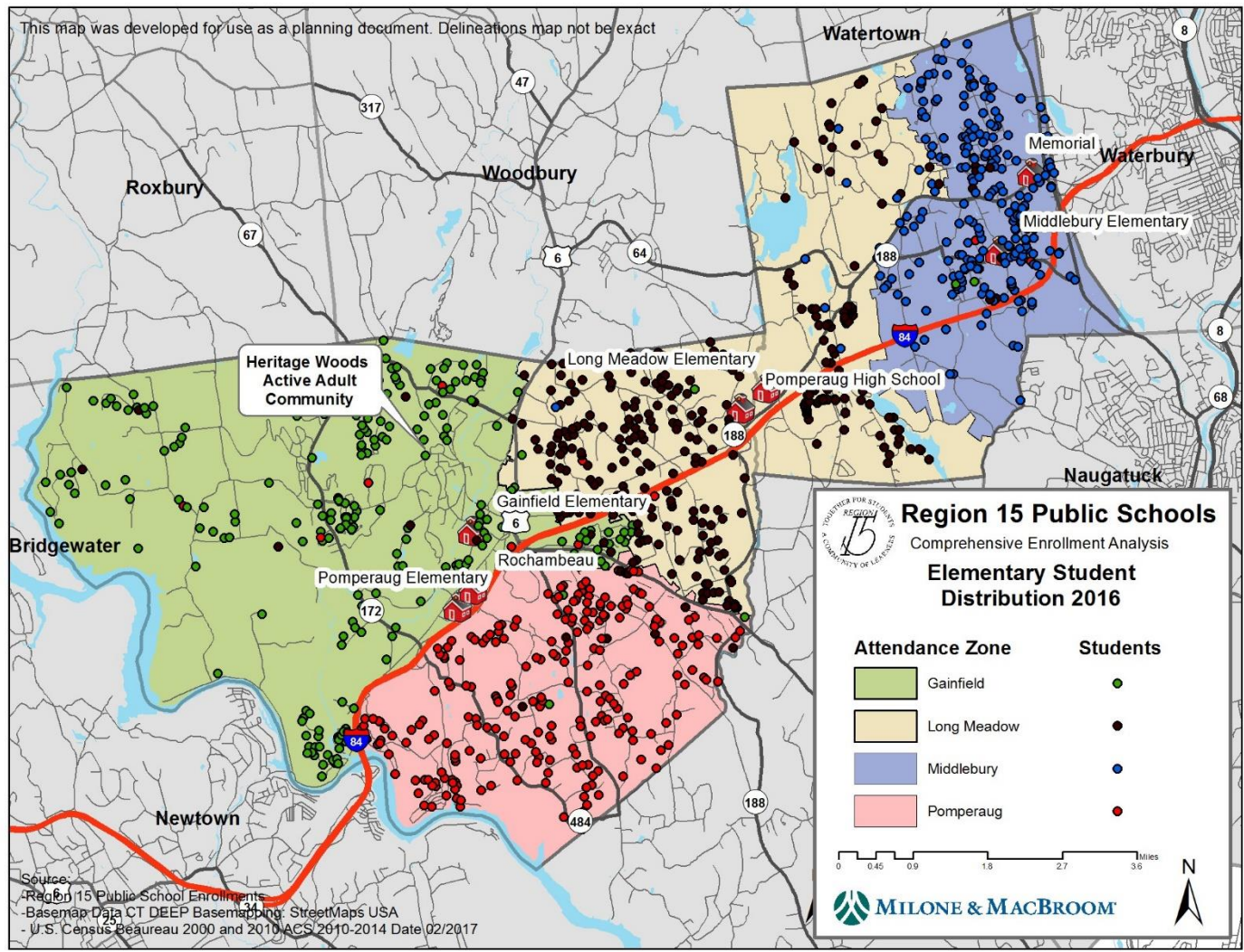
Since redistricting and full-day K implemented in 2013-14:

- GES has remained relatively stable at about 370
- LMES has decreased 9%
- MES has decreased 17%
- PES has decreased 19%





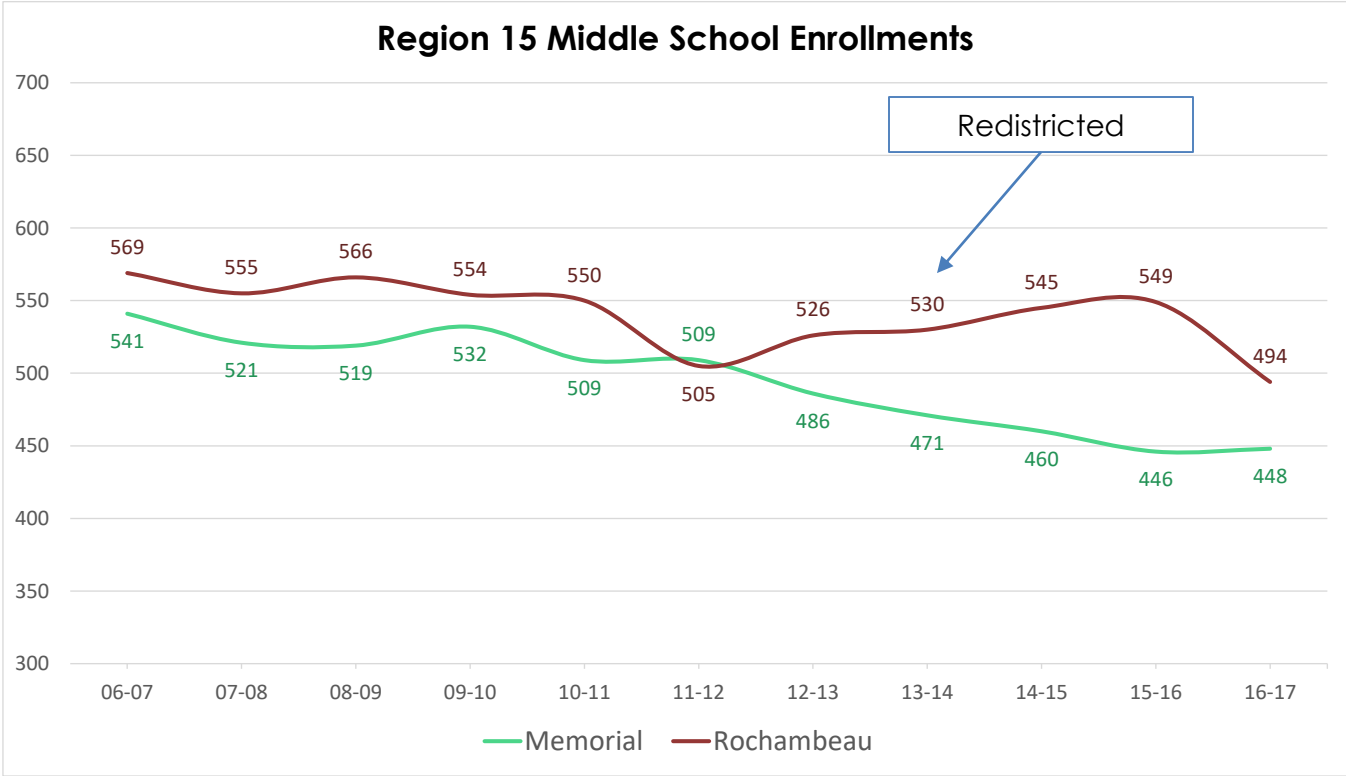
K-5 Student Distribution





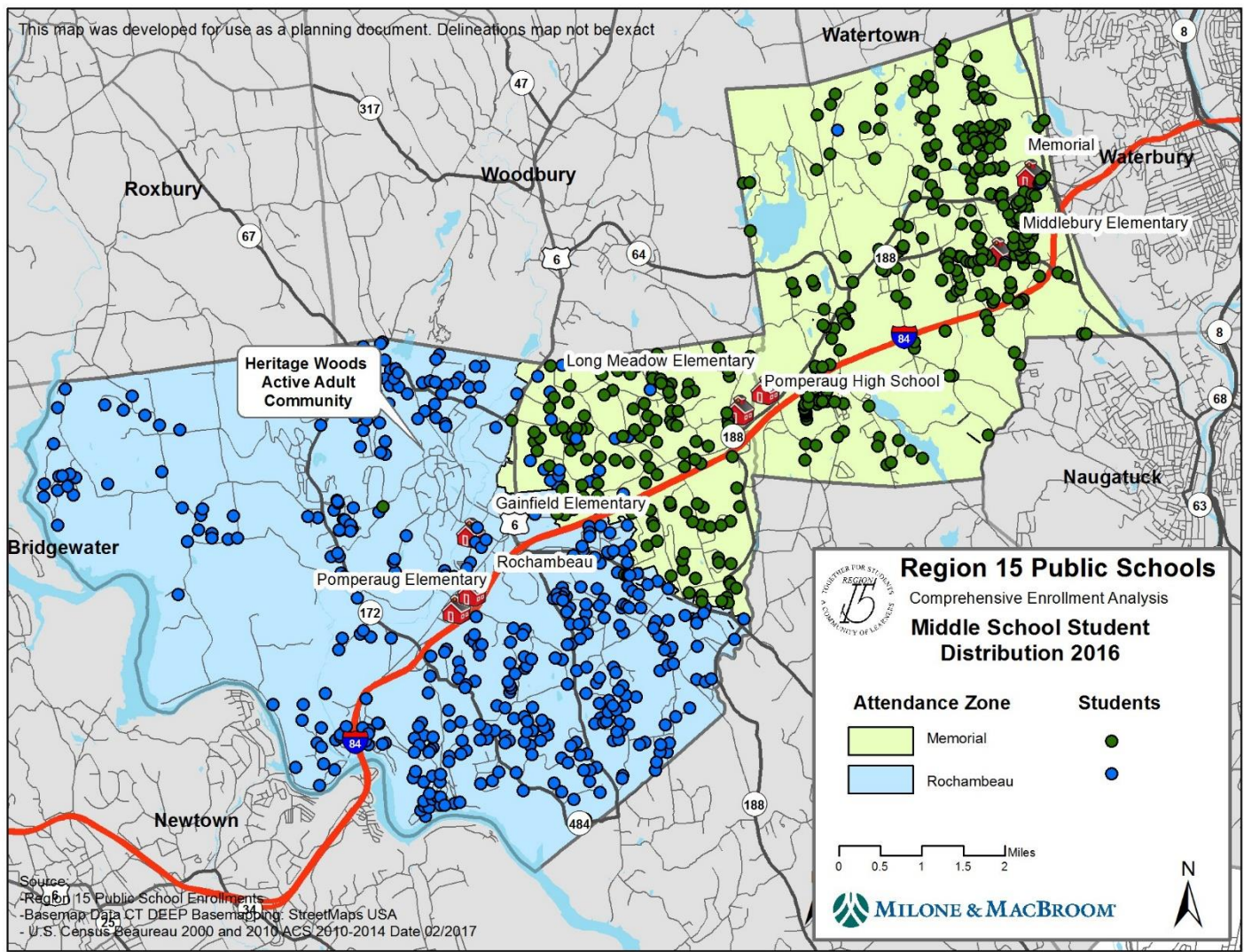
Middle Enrollments

- Despite increasing much of the last 5 years, RMS experienced sharp decline this year due to large 8th grade class leaving and unusually small incoming 6th grade (2% decrease from 2011-12)
- MMS experienced more steady decline over last 5 years – 12% decrease





6-8 Student Distribution





Projections Method

- The Cohort Survival Methodology Relies on Observed Data from the Recent Past in Order to Project the Near Future
- Persistency Ratios Calculated From Historic Enrollment Data to Determine Growth or Loss in a Class as It Progresses Through School System
- Persistency Ratios Account for the Various External Factors Affecting Enrollments: Housing Characteristics, Residential Development, Economic Conditions, Student Transfers In and Out of System, and Student Mobility
- Changes in Population, Housing Stock and Tenure, and Economic Conditions Help Explain Persistency Ratios



Projections Performance

**2012 MMI Projections Performance
Difference of Projected from Actual**

	K-5	6-8	9-12	K-12	PK-12
2013-14	0.0%	-1.3%	0.5%	-0.2%	-0.1%
2014-15	-1.2%	-0.7%	-0.7%	-0.9%	-0.8%
2015-16	-1.8%	-1.9%	-1.4%	-1.7%	-1.9%
2016-17	-2.2%	-1.6%	-4.5%	-2.8%	-2.9%

**2012 Enrollment Projections Performance
Difference from Actual in 2016-17**

School	K-5 Total
Gainfield	-6.2%
Long Meadow	-4.3%
Middlebury	5.5%
Pomperaug	1.7%

**2012 Enrollment Projections Performance
Difference from Actual in 2016-17**

School	6-8 Total
Memorial	1.8%
Rochambeau	-4.7%

- MMI prepared enrollment projections in 2012 for the District and individual schools
- Overall, projections were <3% low on K-12 out four years (2016-17)
- Projections were low on GES and LMES, while high on MES and PES out four years
- Projections were high on MMS and low on RMS out four years



Enrollment History

Region 15 Public School Enrollment History
Kindergarten through 12th Grade

School Year	Birth Year	Births	K	1	2	3	4	5	6	7	8	9	10	11	12	PK	6-8	9-12	K-12	PK-12
2001-02	1996	213	325	309	339	356	370	335	378	382	357	289	343	259	240	62	1,117	1,131	4,282	4,344
2002-03	1997	210	290	340	317	344	363	383	346	384	386	346	272	335	241	38	1,116	1,194	4,347	4,385
2003-04	1998	226	310	307	345	331	358	376	386	351	387	371	320	281	307	35	1,124	1,279	4,430	4,465
2004-05	1999	189	296	329	326	358	346	362	386	392	357	385	347	323	254	33	1,135	1,309	4,461	4,494
2005-06	2000	214	279	324	350	329	369	355	361	387	397	361	336	372	272	55	1,145	1,341	4,492	4,547
2006-07	2001	213	314	309	338	350	330	379	350	358	402	382	350	346	302	62	1,110	1,380	4,510	4,572
2007-08	2002	207	313	341	315	340	356	346	361	351	364	385	379	329	322	64	1,076	1,415	4,502	4,566
2008-09	2003	226	300	334	342	320	341	360	352	373	360	372	384	347	301	58	1,085	1,404	4,486	4,544
2009-10	2004	224	303	319	333	357	326	345	360	356	370	353	348	395	322	55	1,086	1,418	4,487	4,542
2010-11	2005	183	260	325	316	343	355	331	353	354	352	358	327	349	349	45	1,059	1,383	4,372	4,417
2011-12	2006	200	252	277	325	323	340	350	313	352	349	310	338	319	321	53	1,014	1,288	4,169	4,222
2012-13	2007	195	221	259	279	324	328	337	344	314	354	309	316	341	293	54	1,012	1,259	4,019	4,073
2013-14	2008	179	235	235	272	283	319	325	339	344	318	343	285	309	316	54	1,001	1,253	3,923	3,977
2014-15	2009	156	226	239	243	274	284	321	326	339	340	313	313	291	286	51	1,005	1,203	3,795	3,846
2015-16	2010	172	215	228	246	255	280	282	324	322	349	294	291	318	296	64	995	1,199	3,700	3,764
2016-17	2011	165	214	225	229	252	262	286	288	332	322	318	300	290	327	59	942	1,235	3,645	3,704

- Last incoming cohort of 300+ students now in 7th grade
- Subsequent cohorts significantly smaller
- Compounding projected decline



Persistency Ratios

Kindergarten through 12th Grade Persistency Ratios by School Year
2002-03 through 2016-17

Year	Birth-K	K-1	1-2	2-3	3-4	4-5	5-6	6-7	7-8	8-9	9-10	10-11	11-12	Est. of Migration
2002-03	1.3810	1.0462	1.0259	1.0147	1.0197	1.0351	1.0328	1.0159	1.0105	0.9692	0.9412	0.9767	0.9305	2.4%
2003-04	1.3717	1.0586	1.0147	1.0442	1.0407	1.0358	1.0078	1.0145	1.0078	0.9611	0.9249	1.0331	0.9164	3.4%
2004-05	1.5661	1.0613	1.0619	1.0377	1.0453	1.0112	1.0266	1.0155	1.0171	0.9948	0.9353	1.0094	0.9039	3.8%
2005-06	1.3037	1.0946	1.0638	1.0092	1.0307	1.0260	0.9972	1.0026	1.0128	1.0112	0.8727	1.0720	0.8421	3.2%
2006-07	1.4742	1.1075	1.0432	1.0000	1.0030	1.0271	0.9859	0.9917	1.0388	0.9622	0.9695	1.0298	0.8118	1.8%
2007-08	1.5121	1.0860	1.0194	1.0059	1.0171	1.0485	0.9525	1.0029	1.0168	0.9577	0.9921	0.9400	0.9306	2.3%
2008-09	1.3274	1.0671	1.0029	1.0159	1.0029	1.0112	1.0173	1.0332	1.0256	1.0220	0.9974	0.9156	0.9149	0.8%
2009-10	1.3527	1.0633	0.9970	1.0439	1.0188	1.0117	1.0000	1.0114	0.9920	0.9806	0.9355	1.0286	0.9280	1.8%
2010-11	1.4208	1.0726	0.9906	1.0300	0.9944	1.0153	1.0232	0.9833	0.9888	0.9676	0.9263	1.0029	0.8835	0.7%
2011-12	1.2600	1.0654	1.0000	1.0222	0.9913	0.9859	0.9456	0.9972	0.9859	0.8807	0.9441	0.9755	0.9198	-0.1%
2012-13	1.1333	1.0278	1.0072	0.9969	1.0155	0.9912	0.9829	1.0032	1.0057	0.8854	1.0194	1.0089	0.9185	0.2%
2013-14	1.3128	1.0633	1.0502	1.0143	0.9846	0.9909	1.0059	1.0000	1.0127	0.9689	0.9223	0.9778	0.9267	0.8%
2014-15	1.4487	1.0170	1.0340	1.0074	1.0035	1.0063	1.0031	1.0000	0.9884	0.9843	0.9125	1.0211	0.9256	1.2%
2015-16	1.2500	1.0088	1.0293	1.0494	1.0219	0.9930	1.0093	0.9877	1.0295	0.8647	0.9297	1.0160	1.0172	2.2%
2016-17	1.2970	1.0465	1.0044	1.0244	1.0275	1.0214	1.0213	1.0247	1.0000	0.9112	1.0204	0.9966	1.0283	2.0%
Long Term Avg	1.3608	1.0591	1.0230	1.0211	1.0145	1.0140	1.0008	1.0056	1.0088	0.9548	0.9496	1.0003	0.9199	
5-Yr Avg	1.2884	1.0327	1.0250	1.0185	1.0106	1.0005	1.0045	1.0031	1.0073	0.9229	0.9609	1.0041	0.9632	
3-Yr Avg	1.3319	1.0241	1.0226	1.0270	1.0176	1.0069	1.0112	1.0041	1.0060	0.9201	0.9542	1.0112	0.9904	
3-Yr Wgt Avg	1.3066	1.0290	1.0176	1.0299	1.0216	1.0094	1.0143	1.0083	1.0079	0.9079	0.9722	1.0071	1.0075	

- Persistency above 1 = in-migration through move-in or retention
- Persistency below 1 = out-migration through move-out or transfer
- Estimate of migration based on 1st through 4th and 2nd through 5th grade cohorts from year to year – showing uptick in in-migration, reflective of housing sales uptick

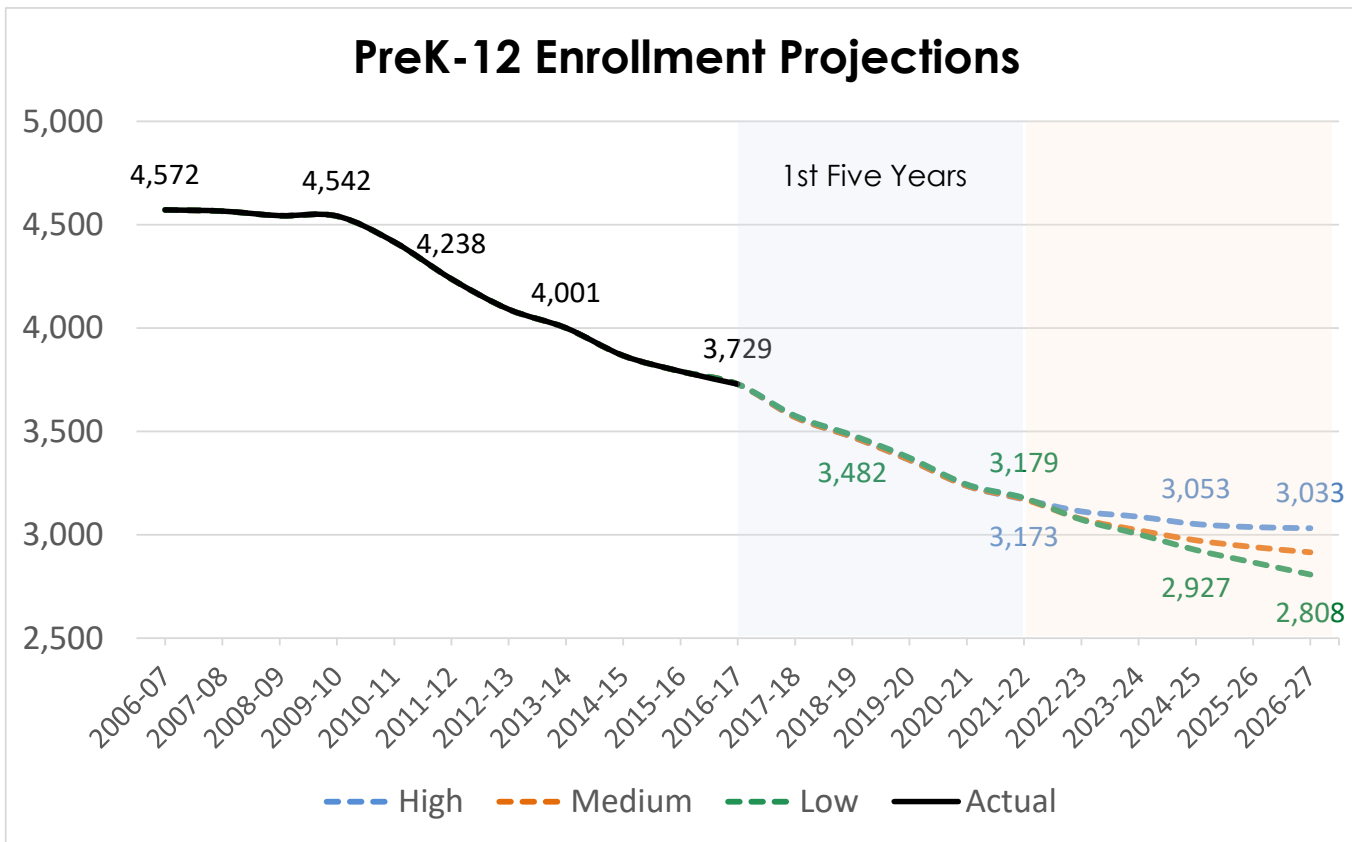


Projections Assumptions

- PreK enrollment remains at current levels
- Private and other public enrollments remain stable
- High projections – continued increases in birth rates and housing sales of existing stock
- Medium projections – continued trends in current birth rates and housing sales
- Low projections – downturn in births and housing market



PreK-12 Projections



- All models project decrease of about 14% over next 5 years
- Models range in additional decrease out ten years – from an additional 4% decrease in the high model to an additional 12% decrease in the low model



PreK-12 Projections

Low Projections					
School Year	K-5	6-8	9-12	K-12	PK-12
2016-17	1,468	942	1,235	3,645	3,704
2017-18	1,406	915	1,196	3,516	3,576
2018-19	1,365	853	1,204	3,422	3,482
2019-20	1,323	829	1,161	3,313	3,373
2020-21	1,287	785	1,112	3,184	3,244
2021-22	1,288	763	1,067	3,119	3,179
2022-23	1,265	741	1,008	3,014	3,074
2023-24	1,255	718	970	2,943	3,003
2024-25	1,239	697	931	2,867	2,927
2025-26	1,226	675	907	2,807	2,867
2026-27	1,219	658	870	2,748	2,808

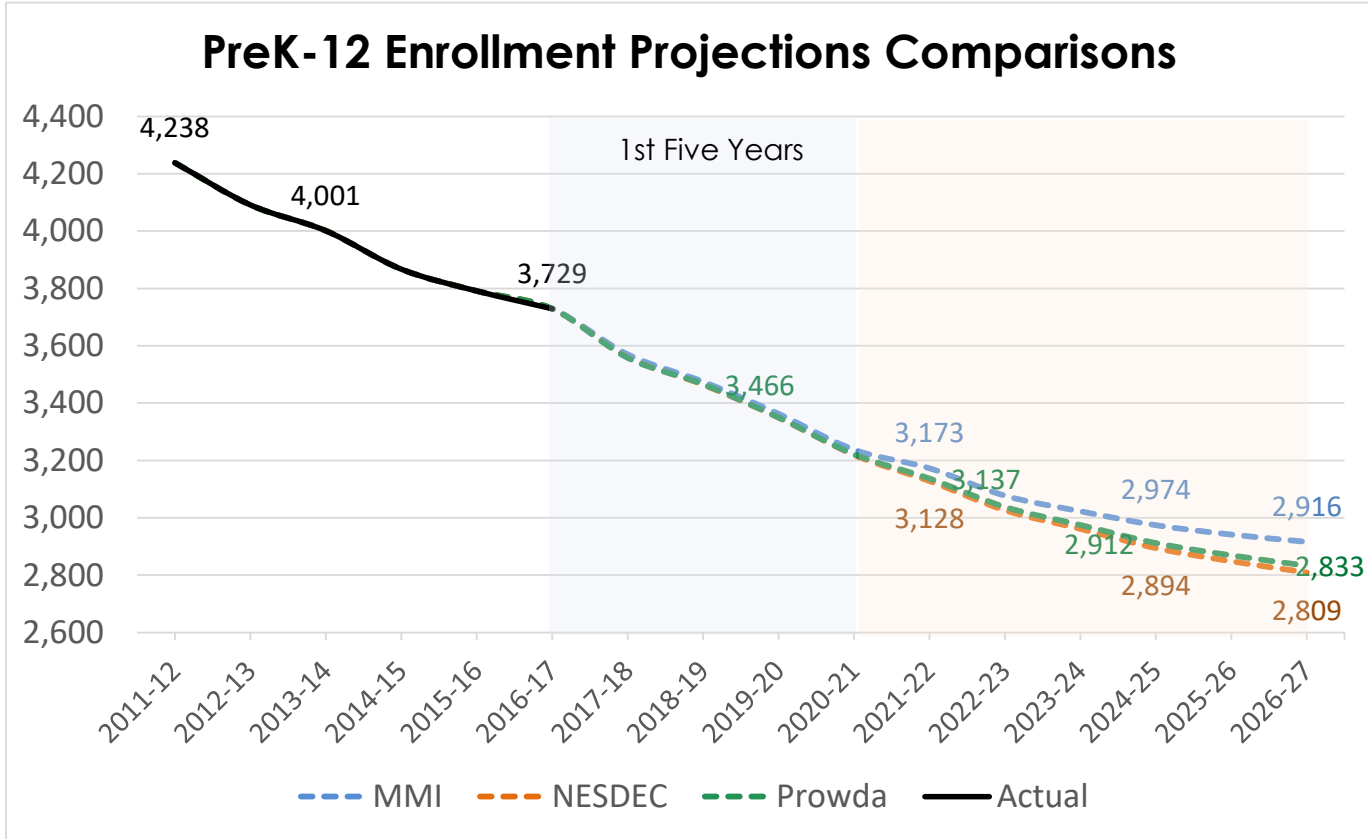
Medium Projections					
School Year	K-5	6-8	9-12	K-12	PK-12
2016-17	1,468	942	1,235	3,645	3,704
2017-18	1,407	912	1,190	3,510	3,570
2018-19	1,369	848	1,197	3,414	3,474
2019-20	1,331	821	1,151	3,303	3,363
2020-21	1,299	775	1,104	3,178	3,238
2021-22	1,303	753	1,056	3,113	3,173
2022-23	1,292	731	994	3,017	3,077
2023-24	1,296	712	954	2,963	3,023
2024-25	1,305	695	915	2,914	2,974
2025-26	1,315	677	889	2,882	2,942
2026-27	1,338	661	857	2,856	2,916

High Projections					
School Year	K-5	6-8	9-12	K-12	PK-12
2016-17	1,468	942	1,235	3,645	3,704
2017-18	1,407	912	1,190	3,510	3,570
2018-19	1,369	848	1,197	3,414	3,474
2019-20	1,331	821	1,151	3,303	3,363
2020-21	1,299	775	1,104	3,178	3,238
2021-22	1,303	753	1,056	3,113	3,173
2022-23	1,329	731	994	3,054	3,114
2023-24	1,362	712	954	3,028	3,088
2024-25	1,384	695	915	2,993	3,053
2025-26	1,412	677	889	2,978	3,038
2026-27	1,455	661	857	2,973	3,033

- Medium projection model best fits data
- Three models present range of best and worst case scenarios for planning purposes
- Elementary and middle schools feel sharpest declines in next five years
- High school projected to experience steady decrease in all three models due to incoming smaller cohorts



Projections Comparison



- Medium projection model more optimistic than previous enrollment projection reports prepared by NESDEC and Peter Prowda
- All closely aligned for next 5 years due to smaller cohorts already in the system



PreK-12 Projections Detail

School Year	Birth Year	Births	K	1	2	3	4	5	6	7	8	9	10	11	12	PK	K-5	6-8	9-12	K-12	PK-12
2016-17	2011	165	214	225	229	252	262	286	288	332	322	318	300	290	327	59	1,468	942	1,235	3,645	3,704
2017-18	2012	152	202	219	230	235	256	264	289	289	334	296	303	303	287	60	1,407	912	1,190	3,510	3,570
2018-19	2013	153	204	207	224	236	239	258	267	290	291	307	283	307	300	60	1,369	848	1,197	3,414	3,474
2019-20	2014	149	198	209	212	230	240	241	261	268	292	268	293	286	304	60	1,331	821	1,151	3,303	3,363
2020-21	2015	141	188	203	213	218	234	242	244	262	269	269	255	296	283	60	1,299	775	1,104	3,178	3,238
2021-22	2016	170	226	192	208	219	222	236	245	245	264	248	256	258	294	60	1,303	753	1,056	3,113	3,173
2022-23	2017	153	204	232	197	213	223	223	238	246	246	243	237	259	256	60	1,292	731	994	3,017	3,077
2023-24	2018	155	206	209	237	202	217	225	226	239	247	226	232	239	257	60	1,296	712	954	2,963	3,023
2024-25	2019	159	212	211	214	244	206	219	227	227	241	228	216	234	237	60	1,305	695	915	2,914	2,974
2025-26	2020	156	208	217	216	220	248	207	221	228	228	222	217	219	232	60	1,315	677	889	2,882	2,942
2026-27	2021	157	209	213	222	222	224	250	209	222	229	210	211	220	216	60	1,338	661	857	2,856	2,916



Elementary Projections Model

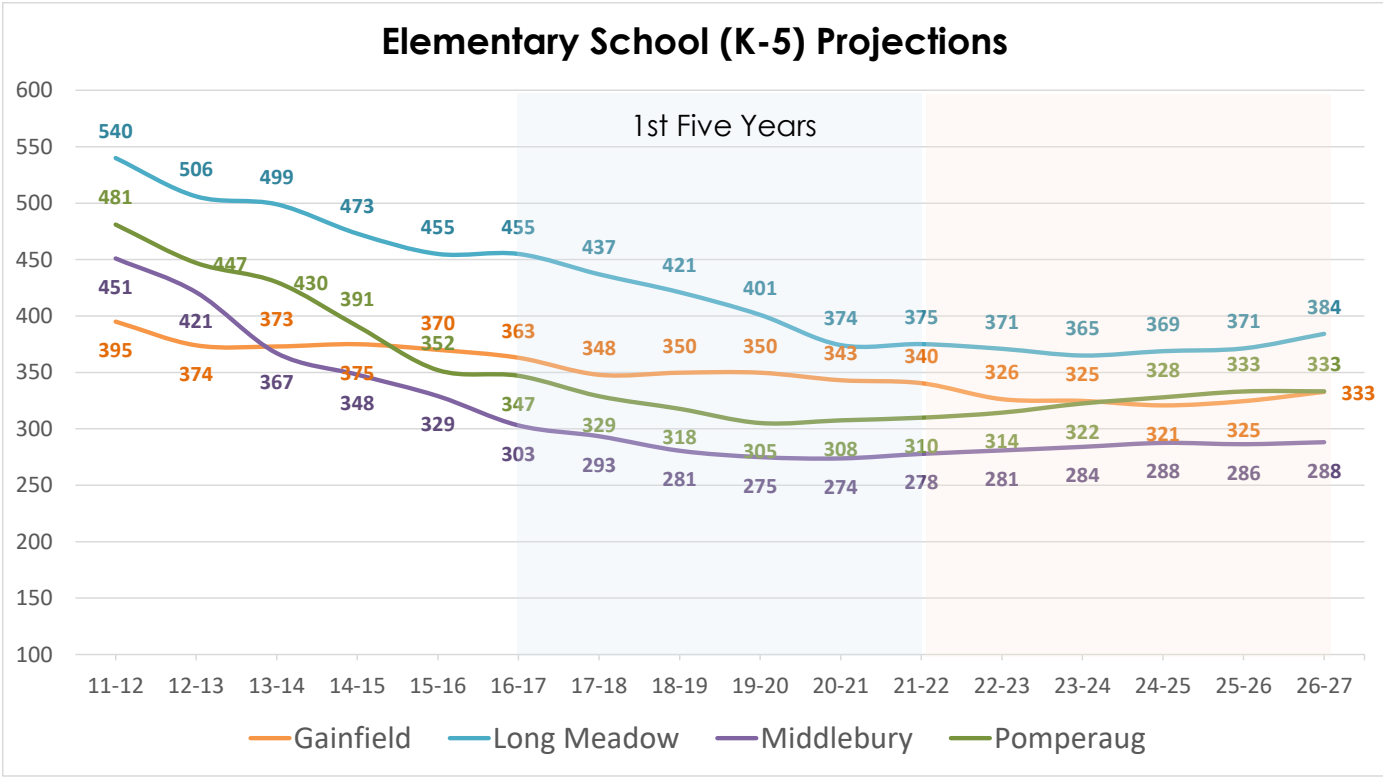
Persistency Ratios By School							
Three-Year Average	Birth Share	Birth-K	K-1	1-2	2-3	3-4	4-5
Gainfield	0.3183	1.4615	1.0319	1.0408	1.0340	1.0154	1.0160
Long Meadow	0.4276	1.5286	1.0271	1.0175	1.0293	1.0080	0.9993
Middlebury	0.2782	1.0384	1.0214	1.0257	0.9993	1.0278	0.9944
Pomperaug	0.3082	1.3206	1.0392	1.0120	1.0412	1.0221	1.0205

Births by Attendance Zone											
Attendance Zone	2011	2012	2013	2014	2015	2016	2017	2018	2019	2020	2021
Gainfield	41	37	42	31	28	39	39	35	37	36	36
Long Meadow	44	42	33	33	23	43	39	39	40	39	39
Middlebury	45	41	42	49	46	45	41	41	42	42	42
Pomperaug	35	31	36	35	44	43	39	39	40	39	39
Total:	165	151	153	148	141	170	157	155	159	156	157

- Individual school persistency ratios used in elementary model – normalized to districtwide projections
- Actual, preliminary and projected births by attendance zone feed model for incoming K
- While MES Birth Share and B-K ratios are low, births were strongest in MES over the last 5 years



Elementary Projections



- LMES: Projected to experience greatest decrease - 18% over next 5 years, 16% over next 10 years
- MES: Projected to experience least decline over long-term – 8% over next 5 years, 5% over 10 years



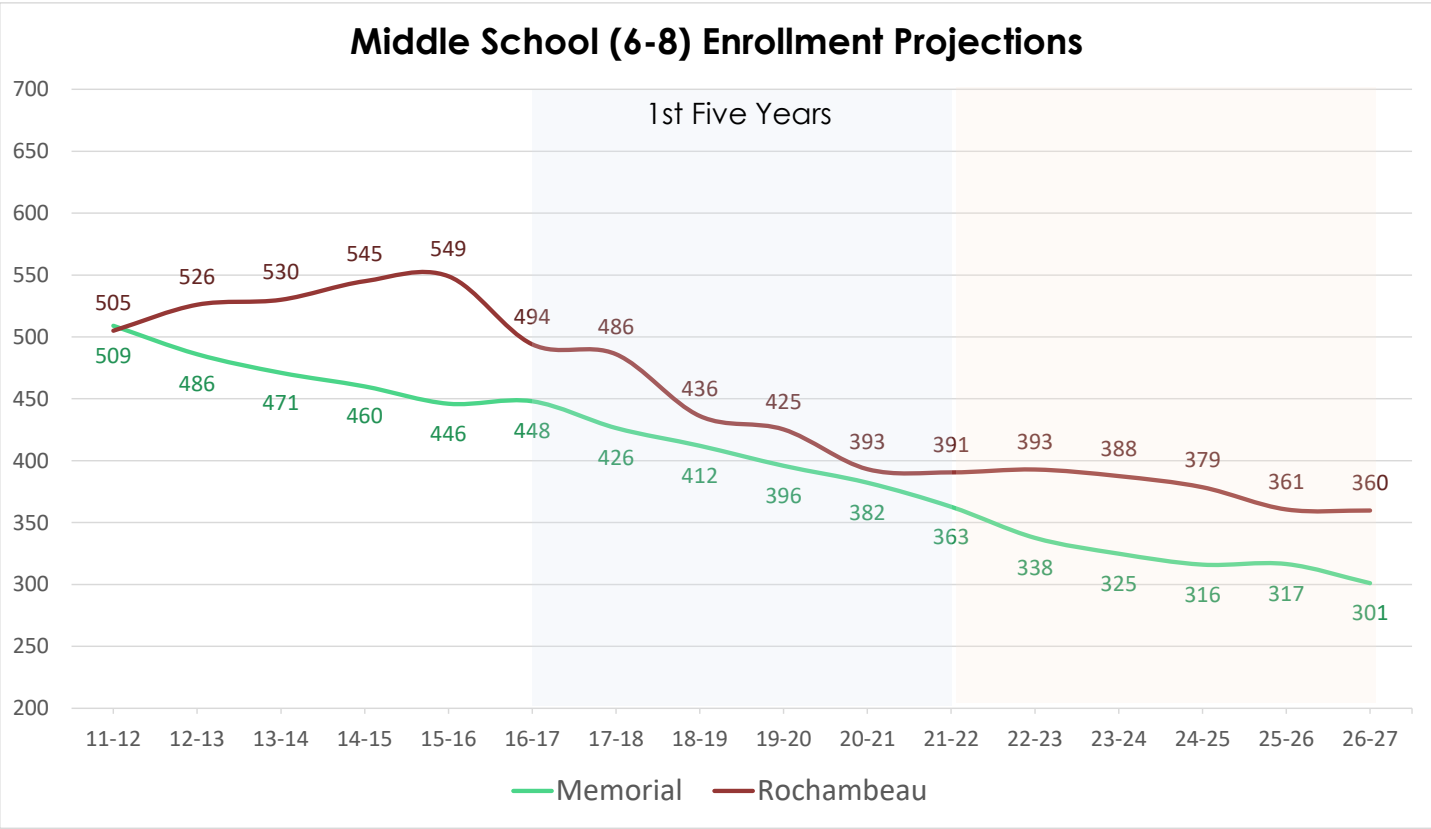
Middle Projections Model

Three-Year Average	5-6	6-7	7-8
MMS	0.9451	1.0005	0.9942
RMS	1.0756	1.0090	1.0158

- Individual school persistency ratios used – normalized to districtwide projections



Middle Projections



- MMS: Projected to experience steady decline - 19% over next 5 years, 33% over next 10 years
- RMS: Projected to decrease significantly in next 5 years before leveling off – decrease 21% over next 5 years, 27% over 10 years



Next Steps

- Update facility utilization and capacity analysis from 2012 with administrators
- Review current and planned programs and space needs
- Analyze projected utilization by building based on enrollment projections, space needs and facility capacities
- Work with Committee to develop options for the future



Elementary Projection Details

Region 15 Public Schools Elementary School Enrollment October 1, 2016							
School	K	1	2	3	4	5	K-5th
Gainfield	63	59	54	53	60	74	363
Long Meadow	63	66	77	82	79	88	455
Middlebury	42	46	47	54	59	55	303
Pomperaug	46	54	51	63	64	69	347
TOTAL	214	225	229	252	262	286	1,468

Region 15 Public Schools - Elementary Enrollment Report - October 1, 2016

Region 15 Public Schools Elementary School Enrollment Projections 2017-18							
School	K	1	2	3	4	5	K-5th
Gainfield	51	65	61	56	54	61	348
Long Meadow	65	64	67	79	83	79	437
Middlebury	42	43	47	47	56	59	293
Pomperaug	44	48	55	53	64	65	329
TOTAL	202	219	230	235	256	264	1,407

Region 15 Public Schools Elementary School Enrollment Projections 2018-19							
School	K	1	2	3	4	5	K-5th
Gainfield	55	53	67	63	57	55	350
Long Meadow	58	66	65	69	80	83	421
Middlebury	43	43	44	47	48	55	281
Pomperaug	47	45	48	57	54	66	318
TOTAL	204	207	224	236	239	258	1,369

Region 15 Public Schools Elementary School Enrollment Projections 2019-20							
School	K	1	2	3	4	5	K-5th
Gainfield	47	57	55	69	64	58	350
Long Meadow	58	59	67	67	70	80	401
Middlebury	47	44	44	44	48	48	275
Pomperaug	47	49	46	50	58	55	305
TOTAL	198	209	212	230	240	241	1,331

Region 15 Public Schools Elementary School Enrollment Projections 2020-2021							
School	K	1	2	3	4	5	K-5th
Gainfield	44	48	59	57	70	65	343
Long Meadow	48	59	60	69	68	69	374
Middlebury	44	48	45	44	45	48	274
Pomperaug	52	48	50	48	51	59	308
TOTAL	188	203	213	218	234	242	1,299

Region 15 Public Schools Elementary School Enrollment Projections 2021-2022							
School	K	1	2	3	4	5	K-5th
Gainfield	56	45	50	61	58	72	340
Long Meadow	66	49	60	62	70	68	375
Middlebury	49	45	49	45	45	45	278
Pomperaug	55	53	49	52	49	52	310
TOTAL	226	192	208	219	222	236	1,303



Elementary Projection Details

Region 15 Public Schools Elementary School Enrollment Projections 2022-2023							
School	K	1	2	3	4	5	K-5th
Gainfield	51	57	46	52	62	58	326
Long Meadow	59	68	50	62	62	70	371
Middlebury	45	50	46	49	46	45	281
Pomperaug	50	57	54	51	53	50	314
TOTAL	204	232	197	213	223	223	1,292

Region 15 Public Schools Elementary School Enrollment Projections 2023-2024							
School	K	1	2	3	4	5	K-5th
Gainfield	50	52	59	48	53	63	325
Long Meadow	59	60	69	52	62	62	365
Middlebury	45	45	51	46	50	46	284
Pomperaug	51	52	58	56	52	54	322
TOTAL	206	209	237	202	217	225	1,296

Region 15 Public Schools Elementary School Enrollment Projections 2024-2025							
School	K	1	2	3	4	5	K-5th
Gainfield	52	51	54	62	49	54	321
Long Meadow	62	61	61	71	52	62	369
Middlebury	47	46	47	51	47	50	288
Pomperaug	52	53	52	60	57	53	328
TOTAL	212	211	214	244	206	219	1,305

Region 15 Public Schools Elementary School Enrollment Projections 2025-2026							
School	K	1	2	3	4	5	K-5th
Gainfield	50	53	53	56	62	50	325
Long Meadow	60	63	62	63	71	52	371
Middlebury	46	47	47	47	53	47	286
Pomperaug	51	54	54	54	61	58	333
TOTAL	208	217	216	220	248	207	1,315

Region 15 Public Schools Elementary School Enrollment Projections 2026-27							
School	K	1	2	3	4	5	K-5th
Gainfield	51	52	55	55	57	63	333
Long Meadow	60	61	64	64	64	71	384
Middlebury	46	46	48	47	48	52	288
Pomperaug	52	53	55	56	56	63	333
TOTAL	209	213	222	222	224	250	1,338



Middle Projection Details

Region 15 Public Schools Middle School Enrollment October 1, 2016				
School	6	7	8	K-5th
Memorial	147	145	156	448
Rochambeau	141	187	166	494
TOTAL	288	332	322	942

Region 15 Public Schools Middle School Enrollment 2017-18				
School	6	7	8	6-8th
Memorial	135	147	144	426
Rochambeau	154	142	190	486
TOTAL	289	289	334	912

Region 15 Public Schools Middle School Enrollment 2018-19				
School	6	7	8	6-8th
Memorial	130	135	146	412
Rochambeau	136	155	145	436
TOTAL	267	290	291	848

Region 15 Public Schools Middle School Enrollment 2019-20				
School	6	7	8	6-8th
Memorial	131	130	134	396
Rochambeau	130	137	158	425
TOTAL	261	268	292	821

Region 15 Public Schools Middle School Enrollment 2020-21				
School	6	7	8	6-8th
Memorial	121	131	130	382
Rochambeau	122	131	140	393
TOTAL	244	262	269	775

Region 15 Public Schools Middle School Enrollment 2021-22				
School	6	7	8	6-8th
Memorial	111	121	130	363
Rochambeau	134	123	133	391
TOTAL	245	245	264	753

Region 15 Public Schools Middle School Enrollment 2022-23				
School	6	7	8	6-8th
Memorial	106	111	121	338
Rochambeau	133	135	125	393
TOTAL	238	246	246	731

Region 15 Public Schools Middle School Enrollment 2023-24				
School	6	7	8	6-8th
Memorial	109	106	110	325
Rochambeau	117	134	137	388
TOTAL	226	239	247	712

Region 15 Public Schools Middle School Enrollment 2024-25				
School	6	7	8	6-8th
Memorial	102	109	105	316
Rochambeau	125	118	136	379
TOTAL	227	227	241	695

Region 15 Public Schools Middle School Enrollment 2025-26				
School	6	7	8	6-8th
Memorial	106	102	108	317
Rochambeau	115	126	120	361
TOTAL	221	228	228	677

Region 15 Public Schools Middle School Enrollment 2026-27				
School	6	7	8	6-8th
Memorial	93	106	101	301
Rochambeau	116	116	128	360
TOTAL	209	222	229	661